

MAIN FEATURES

Indoor/outdoor installations

Stainless steel screws

Black epoxy powder painted

Weatherproof standard IP66 (IR50) and IP65 (IR300)

DESCRIPTION

The infrared illuminators from VIDEOTECH allow the generation of high quality images during night surveillance to TVCC cameras sensitive to infrared rays.

IR infrared illuminators are made from die-cast aluminium; painted with epoxypolyester; they ensure high protection and environmental adaptability.

The infrared beam has a wavelength of 850nm. IR illuminators are assembled with stainless steel screws and "O" rings which guarantee a IP66 weatherproof standard (IP65 for IR300).

Lamps with different light beams (spot, flood, wide flood) are available.

They're recommended for military surveillance, perimeter surveillance, airports and prisons.



IR50



IR300



OIRCR



IRPS12



IRBA



OSUPPIR

AVAILABLE MODELS

| Illuminators | |
|--------------|---|
| IR50SP11 | Outdoor IR illuminator spot |
| IR50FL11 | Outdoor IR illuminator flood |
| IR50WFL11 | Outdoor IR illuminator wideflood |
| IR50FL2 | Outdoor IR illuminator flood |
| IR300SP2 | Outdoor IR illuminator spot |
| IR300FL2 | Outdoor IR illuminator flood |
| IR300WFL2 | Outdoor IR illuminator wideflood |
| Accessories | |
| IRPS12 | Power supply IN 230Vac, OUT 12Vac in weatherproof box for IR50 |
| IRBA | Bracket for mounting two infrared illuminators IR50 on HEG housing |
| OIRCR | Night switch for infrared illuminator 230Vac |
| OSUPPIR | Bracket for mounting of one infrared IR50/IRBD on VERSO, VERSO COMPACT, HEG, HOV housings |

| INFRARED BEAM/DISTANCE | | | | |
|------------------------|-----|-----------------|---------------|---------------------|
| | Vac | Horizontal beam | Vertical beam | Distance (m / ft) * |
| IR50SP11 | 12 | 10° | 10° | 20 / 65.6 |
| IR50FL11 | 12 | 40° | 40° | 16 / 52.4 |
| IR50WFL11 | 12 | 60° | 60° | 12 / 39.3 |
| IR50FL2 | 230 | 40° | 40° | 16 / 52.4 |
| IR300SP2 | 230 | 10° | 8° | 65 / 213.2 |
| IR300FL2 | 230 | 23° | 10° | 50 / 164 |
| IR300WFL2 | 230 | 40° | 20° | 35 / 114.8 |

* Typical distance of the subject to illuminate; it depends of the reflection coefficient of the illuminated scene, camera sensitivity at IR wavelength, lens combination, etc.

TECHNICAL DATA

GENERAL

Die-cast aluminium body
 Epoxypolyester powder painting, black colour
 Stainless steel screws
 Infrared beam wavelength: 850nm
 Supplied with instruction manual and 1.5m (4.9ft) of pre-wired cable

MECHANICAL

1 PG9 cable gland
 Dimensions (WxHxL)
 IR50 108x124.5x146mm (4.2x4.9x5.7in)
 IR300 213x235x262mm (8.3x9.2x10.3in)
 IRPS12 152x159x146mm(5.9x6.3x5.7in)

ELECTRICAL

Power

- 12Vdc/Vac, consumption 50W (IR50)
- 230Vac, consumption 50W (IR50)
- 230Vac, consumption 300W (IR300)

Lamp duration

IR50 2000 hours
 IR300 3000 hours

ENVIRONMENT

Indoor / Outdoor
 Operating temperature: -20°C / +60°C (-4°F / +140°F)

CERTIFICATIONS

CE EN60065
 IP66 (IR50)
 IP65 (IR300)
 IP56 (IRPS12)

ACCESSORIES

IRPS12 Power supply 230Vac/12Vac in weatherproof box for IR50
 OIRCR Night switch for infrared illuminators 230Vac, capacity 2VA

BRACKETS AND ADAPTORS

IRBA Bracket for mounting 2 infrared illuminators on HEG housing (not compatible with double filter housings)
 OSUPPIR Bracket for mounting 1xIR50 or 1xIRBD infrared illuminator for housings HPV42, HPV36, HOV, HEG (also for versions with blower system)

SPARE PARTS

OIR12FA Front panel IR50 complete with filter
 OIR220 Complete wiring for IR300
 OIR300FA Front panel IR300 complete with filters



VERS0 + IR50

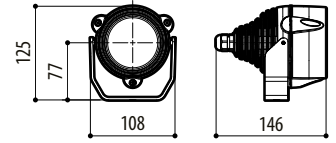


HEG + IRBA + 2 IR50

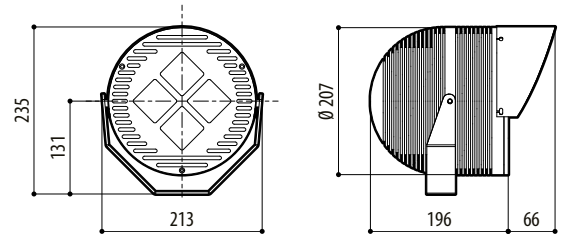
| PACKAGE | | | | | | | |
|---------|-------------|------|----------------|------|----------------------------|--------------|--------------------|
| Code | Unit weight | | Package weight | | Package dimensions (WxHxL) | | Master carton unit |
| | kg | lb | kg | lb | cm | in | |
| IR50 | 0.9 | 2.0 | 1.3 | 2.9 | 14.5x15.0x27.0 | 5.7x5.9x10.6 | 15 |
| IR300 | 5.3 | 11.7 | 6.2 | 13.7 | 24.0x32.0x24.5 | 9.4x12.6x9.6 | 5 |
| IRPS12 | 2.0 | 4.4 | 2.1 | 4.6 | 19.0x19.0x19.0 | 7.4x7.4x7.4 | 12 |
| IRBA | 0.6 | 1.3 | 0.7 | 1.5 | 12.0x14.0x34.0 | 4.7x5.5x13.3 | 16 |
| OSUPPIR | - | - | - | - | - | - | - |
| OIRCR | 0.2 | 0.4 | 0.2 | 0.4 | 6.3x4.4x11.7 | 2.4x1.7x4.6 | - |

IR

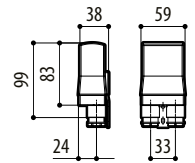
IR50



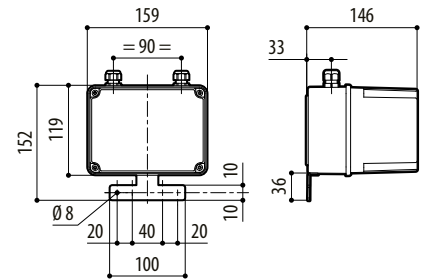
IR300



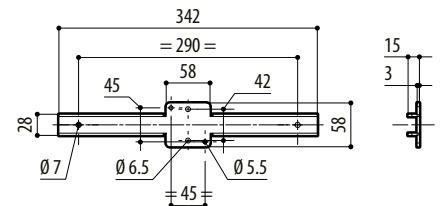
OIRCR



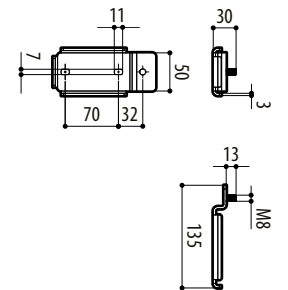
IRPS12



IRBA



OSUPPIR



mm 1:10

