

# HOUSINGS ADAPTERS

REVISION 0945



## MAIN FEATURES

Robust construction

Epoxy powder painted

## DESCRIPTION

### WSFPA

Die-cast aluminium reinforced support plate, suitable for WBJA, WBMA and WBOVA2 mounts. It allows the cable to pass internally through a slot to connect to the WBOVA2 bracket. Epoxy polyester powder painted.

### WCWA

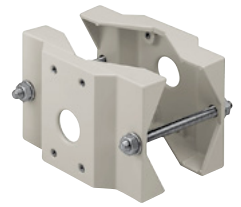
Corner adapter for WBJA, WBMA and WBOVA2 mounts. It allows the cable to pass internally through a slot to connect to the WBOVA2 bracket. Constructed from steel and epoxy polyester powder painted.

### DBHWGC

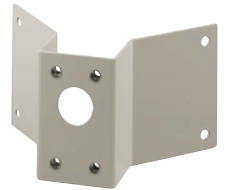
Pole adapter compatible with WBJA/WBMA/WBOVA2 (to use with adaptor WCPA). Constructed from steel and epoxy polyester powder painted, colour RAL9002.

### WCPA

Die-cast aluminium reinforcing support plate, suitable for WBJA, WBMA and WBOVA2 mounts. It allows the cable to pass internally through a slot to connect to the WBOVA2 bracket. Epoxy polyester powder painted.



WSFPA



WCWA



DBHWGC



WCPA

## HOUSINGS ADAPTERS

AVAILABLE MODELS			
	Brackets for housings		
	WBJA	WBMA	WBOVA2
<b>Pole mount adaptor</b>			
WSFPA	•	•	•
DBHWGC *	•	•	•
<b>Corner adaptor</b>			
WCWA	•	•	•
<b>Support plate adaptor</b>			
WCPA	•	•	•

\* To use with adaptor WCPA.

### TECHNICAL DATA

#### GENERAL

Die-cast aluminium (WSFPA, WCPA)  
 Constructed from steel (WCWA, DBHWGC)  
 Epoxypolyester powder painting, RAL9002 colour  
 Stainless steel screws

#### MECHANICAL

##### WSFPA

Pole installation  
 Load rating: 30kg (66lb)  
 Pole: Ø 65 - 110mm (2.5 - 4.3in)

##### DBHWGC

Pole installation  
 Max load: 25kg (55lb)  
 Pole diameters 210mm max 225mm (8.2" - 8.85")  
 Compatible with WBJA/WBMA/WBOVA2 (to use with adaptor WCPA)

##### WCWA

Corner installation  
 Load rating: 30kg (66lb)

##### WCPA

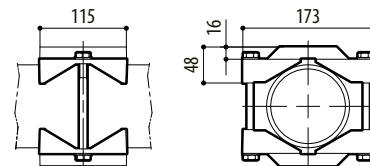
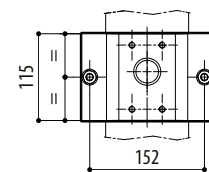
Wall installation  
 Load rating: 50kg (110lb)

#### ENVIRONMENT

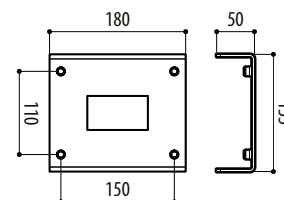
Indoor / Outdoor

#### PACKAGE

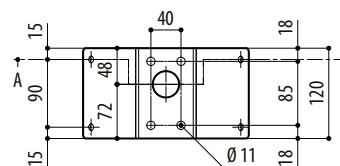
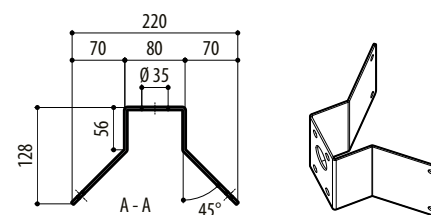
Code	Unit weight		Package weight		Package dimensions (WxHxL)		Master carton
	kg	lb	kg	lb	cm	in	unit
WSFPA	0.9	2.0	1.0	2.2	10.0x16.0x23.0	3.9x6.3x3.9	30
WCWA	1.0	2.2	1.1	2.4	14.5x15.0x27.0	5.7x5.9x10.6	15
WCPA	0.6	1.3	0.7	1.5	10.0x16.0x23.0	3.9x6.3x9.1	30



WSFPA



DBHWGC



WCWA

mm 1:10