



# BRACKETS AND ADAPTERS FOR EXPLOSION PROOF SYSTEMS OF EX SERIES

## EXWBJ BRACKET AND BALL JOINT FOR EXH EXPLOSION-PROOF HOUSING

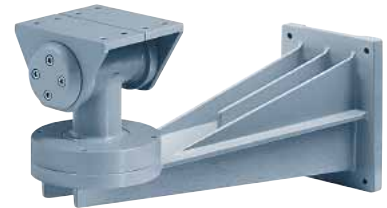
- Solid anticorodal aluminium construction
- Epoxy polyester powder painting, RAL7032
- Strong wall mounting of the EXH housings
- The EXBJ, alone, allows the column mount
- Version available with RAL7001 special painting for low temperature applications (EXWBJ00R)



EXWBJ000

## EXPTWB BRACKET FOR EXPT EXPLOSION-PROOF PAN & TILT

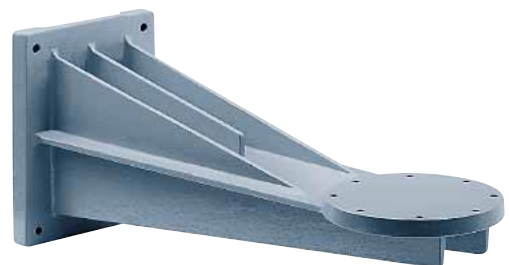
- Solid anticorodal aluminium construction
- Epoxy polyester powder painting, RAL7032
- Strong wall mounting of the EXPT P&T motors
- Available version with RAL7001 special painting for low temperature application (EXPTWB00R)



EXWBJ00R



EXPTWB000



EXPTWB00R

INTEGRATED POSITIONING UNITS
EXPLOSION-PROOF SYSTEMS
STAINLESS STEEL SYSTEMS
THERMAL CAMERAS
CAMERA HOUSINGS
DOME ENCLOSURES
VANDAL RESISTANT HOUSINGS
ILLUMINATORS FOR SURVEILLANCE
P&T MOTORS AND TELEMETRY
CAMERA BRACKETS
DIGITAL VIDEO SYSTEMS
CONTROL KEYBOARDS
VIDEO SWITCHING AND DISTRIBUTION
VIDEO AND DATA TRANSMISSION

**TECHNICAL DATA**

**EXWBJ BRACKET AND BALL JOINT FOR EXH EXPLOSION-PROOF HOUSING**

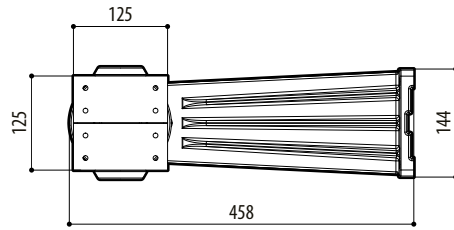
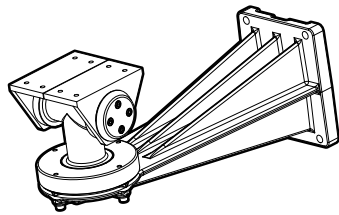
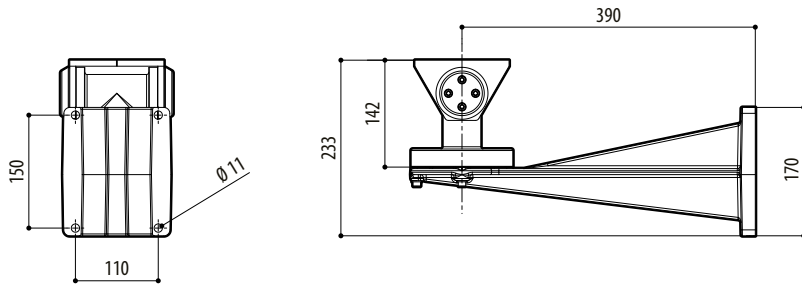
Load rating: 35kg (77lb)  
 Length: 455mm (17.9in)  
 Weight: 6.6kg (14.5lb)

**EXPTWB BRACKET FOR EXPT EXPLOSION-PROOF PAN & TILT**

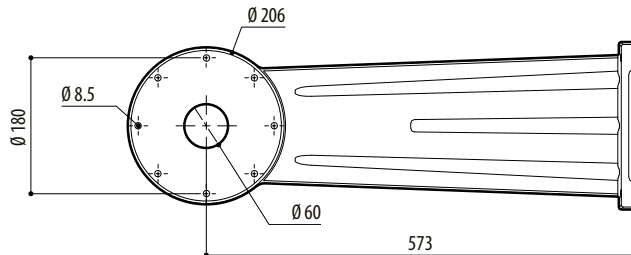
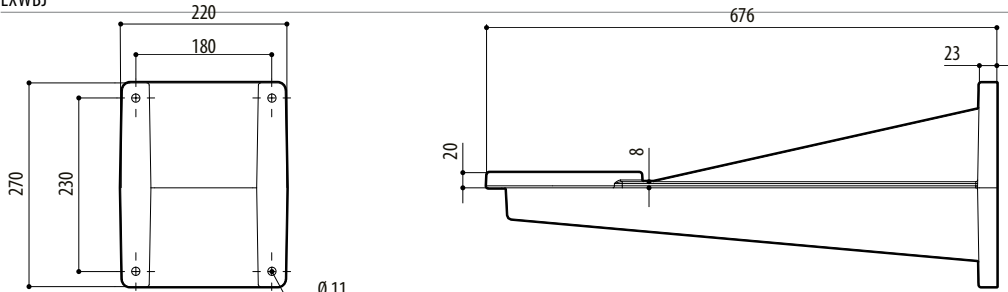
Load rating: 100kg  
 Length: 676mm (26.6in)  
 Weight: 11kg (24lb)

**PART NUMBER**

EXWBJ00R	Bracket and ball joint for EXH RAL7001
EXWBJ000	Bracket and ball joint for EXH RAL7032
EXBJ000	Ball joint for EXH RAL7032
EXBJ00R	Ball joint for EXH RAL7001
EXPTWB000	Supporto per EXPT RAL7032
EXPTWB00R	Supporto per EXPT RAL7001



EXWBJ



EXPTWB