

ALBERT

VIDEO CONTENT ANALYSIS, DISTRIBUTED INTELLIGENCE, DECENTRALIZED RECORDING

REVISION 1042



MAIN FEATURES

Cooperation between single units on a system

Advanced Event Detector

H264, Full D1/CIF/QCIF, 25fps (PAL) / 30fps (NTSC)

Distributed recording system

Professional video surveillance software

Drag and drop set-up

PTZ and ULISSE systems control

Integration in third party software

40GB Industrial Hard Disk, H264 recording (optional)

Easy to configure and operate

Cost-saving

Patented

DESCRIPTION

ALBERT is a system created for outdoor video surveillance with advanced algorithms for video digital analysis.

The ALBERT devices are able to perform a semi-automatic tracking across cameras, thanks to the extraordinary cooperation capabilities between units and assisted camera surfing. The distributed intelligence allows these devices to exchange information between them, making an active cooperation possible, and launches an alarm only if necessary, with minimum set-up effort and no need of a central server.

ALBERT features an advanced, outdoor-oriented, event detector. Minimum configuration parameters are needed. The system will automatically adapts parameters to moving trees, rain, light changes and shadows.

Thanks to the optional hard disk and the on board searching engine, it is possible to retrieve the events and play back the related video.

ALBERT applies advanced technology in video surveillance systems, allows a quick setup, the ease of use, the reduction of false alarms and a major cost savings.



FRONT



BACK

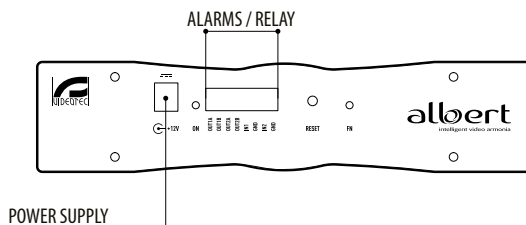


VCA RULES

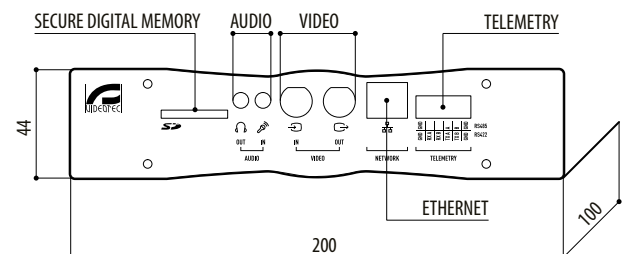
- Virtual fence
- Tripwire
- Forbidden area
- Camera tampering
- Prolongued presence inside an area
- Object removal

NO FALSE ALARM IN CASE OF:

- Movement of leaves
- Shadow variations
- Light / weather variations
- Floating object movements



ALBERT



mm 1:3

AVAILABLE MODELS

Code	
VA01002	ALBERT unit
VA03002	ALBERT unit with 40GB rugged Hard Disk for H264 recording

TECHNICAL DATA

GENERAL

1 video input (PAL/NTSC), 1 video loop

1 audio input (mono)

1 audio output (stereo)

Supported resolutions:

- 720x576/720x480 D1
- 360x288/360x240 CIF
- 180x144/180x120 QCIF

Compression Algorithms:

- Video: H.264 main profile
- Audio: AAC Standard

6 simultaneous video streamings

Ethernet port: 10/100 Mbit

SD secure digital slot

Hard Disk: 40GB (optional)

2 digital outputs (contacts relay)

2 digital inputs (alarm contacts)

MECHANICAL

Constructed from aluminium

Epoxy polyester powder painting, white colour

Dimensions: 200Wx100Dx44Hmm

ELECTRICAL/VIDEO

Power Supply 12Vdc

Power consumption 4W

Power consumption with hard disk 7W

COMMUNICATIONS

PTZ control RS485

PROTOCOLS

PELCO D, VIDEOTECH MACRO

PELCO is registered trademark.

The product may be interfaced with devices not manufactured by VIDEOTECH. It is possible that the interface protocols have changed or are in a different configuration from earlier tested units by VIDEOTECH. VIDEOTECH recommends a test prior to installation. VIDEOTECH will not be liable for any installation costs or lost revenues in the event a compatibility problem will occur.

ENVIRONMENT

Indoor

Operating temperature: -5°C/55°C (23°F/131°F)

CERTIFICATIONS

CE EN60950-1, EN61000-6-3 e EN50130-4

UL E249792

ACCESSORIES

USB485 USB-RS485 converter to connect DCJ and DCT keyboards to the PC for the telemetry control via IP

RELATED PRODUCTS

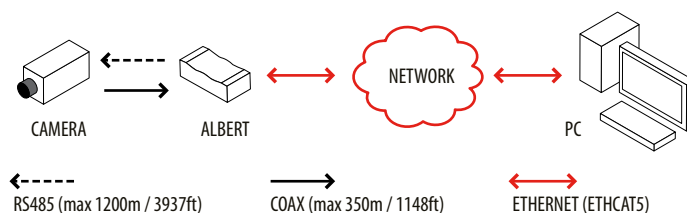
MAXIMUS MPX Explosion proof stainless steel positioning unit

ULISSE Positioning Unit

ULISSE COMPACT Compact positioning unit

DCJ Control keyboard with three axis joystick

DCT Touch screen control keyboard with three axis joystick

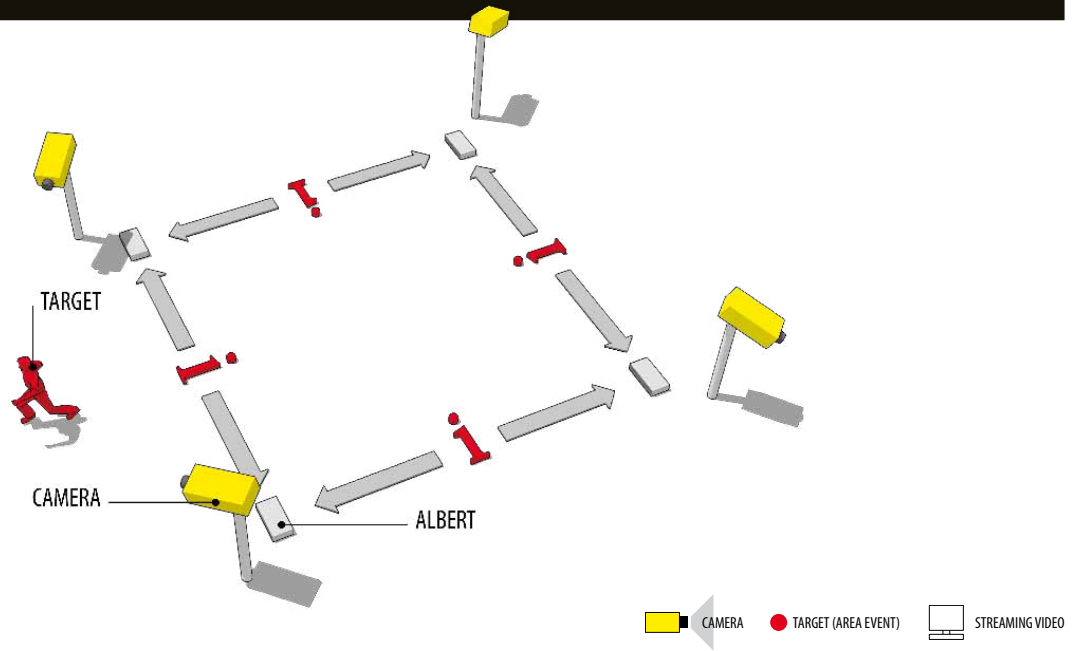


PACKAGE

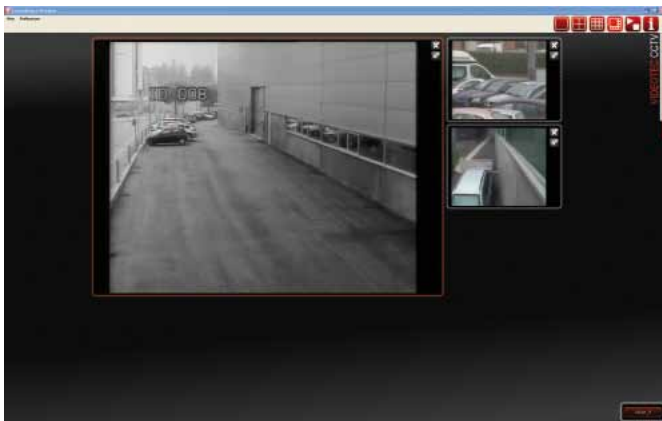
Code	Unit weight		Package weight		Package dimensions (WxHxL)		Master carton unit
	kg	lb	kg	lb	cm	in	
VA01002	0.6	1.3	-	-	26.5x19.0x18.0	10.4x7.5x7.1	-
VA03002	1.2 *	2.6 *	-	-	26.5x19.0x18.0	10.4x7.5x7.1	-

* With hard disk.

COOPERATION

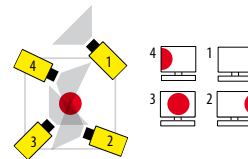


KEY FEATURES



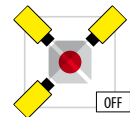
■ ASSISTED NAVIGATION

Proposes alternative live views of the event, to provide more perspectives and a better view.



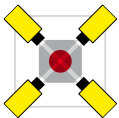
■ AUTOMATIC RECORDING

The adjacent cameras will automatically record a number of films of the same event, providing alternative images from a variety of perspectives.



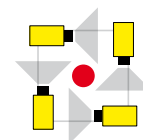
■ REDUNDANT SYSTEM

If any unit is tampered with, the adjacent cameras will cover the area of the redundant unit until it has been repaired.



■ FOCUS ON THE ALARMED AREA

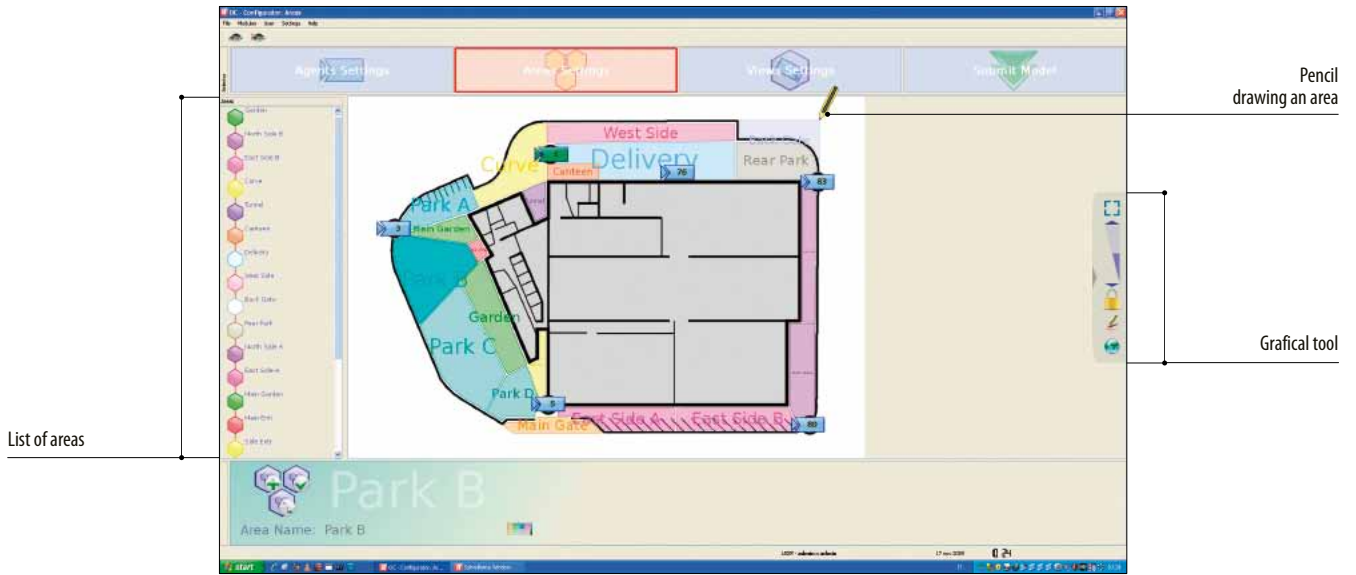
When a unit detects an event it will send a priority message to the other units. At this point, all the available units will swiftly focus their cameras on the alarmed area.



■ INTELLIGENT PATROLLING

The units cooperate to achieve optimal cover of the areas, reducing the superimposing of cameras during patrolling.

SW FOR PROFESSIONAL VIDEO SURVEILLANCE

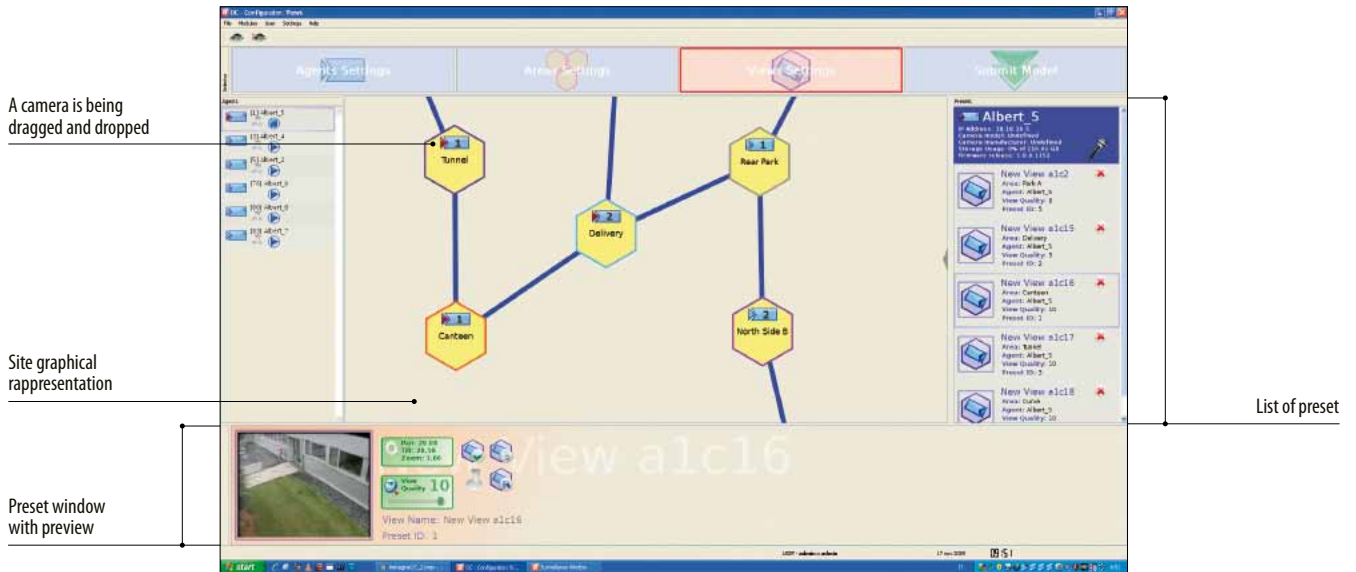


List of areas

Pencil drawing an area

Grafical tool

AREA SETTING



A camera is being dragged and dropped

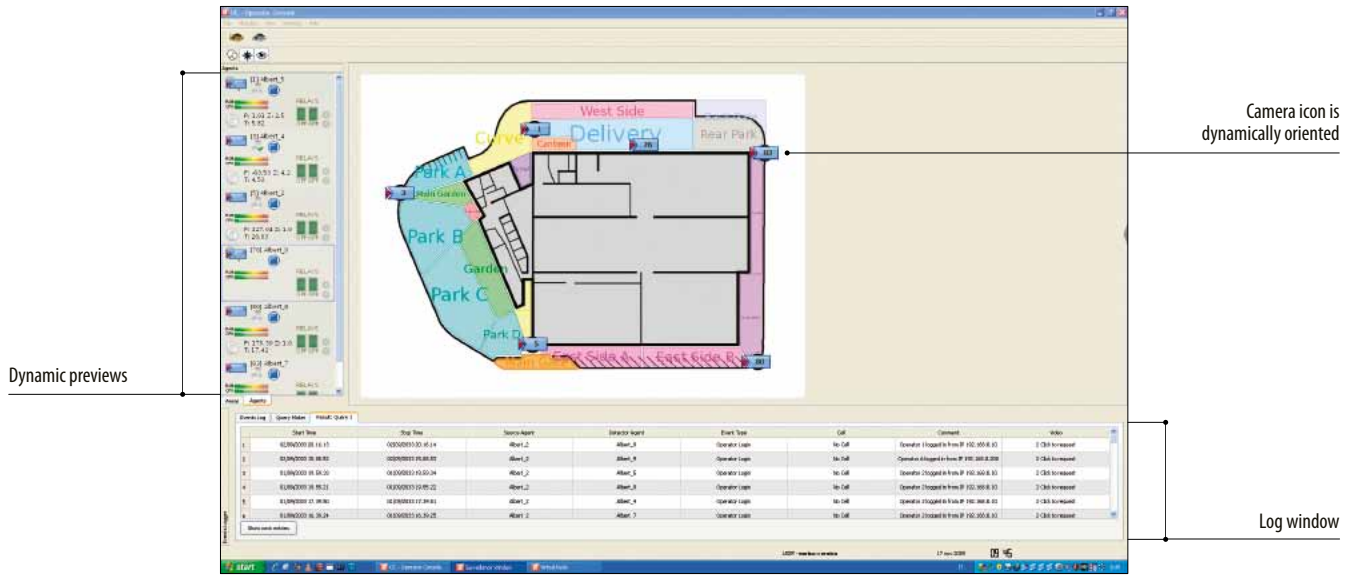
Site graphical rappresentation

Preset window with preview

List of preset

PRESET SETTINGS: ASSOCIATION OF CAMERAS TO AREAS OF INTEREST WITH EASY DRAG AND DROP

SW FOR PROFESSIONAL VIDEO SURVEILLANCE



SOFTWARE IN ACTION SHOWING VIEWS AND EVENT LOG BAR



EXAMPLE OF ASSISTED NAVIGATION AT VIDEOTECH'S INSTALLATION

