

AVAILABLE ANALOG CAMERAS				
	SONY Day/Night 36x		SONY Day/Night 28x	
	PAL	NTSC	PAL	NTSC
Optical zoom	36x		28x	
Wide Dynamic Range	Yes		No	
High horizontal resolution	Up to 550 TV Lines		Up to 550 TV Lines	
Day-Night (Auto ICR)	Yes			
Image Sensor	1/4" EXView HAD CCD		1/4" Super HAD CCD II	
Min. night Illumination (ICR ON) (typical)	0.01 Lux / 1/3s	0.01 Lux / 1/4s	0.0015 Lux / 1/3s	0.0015 Lux / 1/4s
Min. day Illumination (ICR OFF) (typical)	0.1 Lux / 1/3s	0.1 Lux / 1/4s	0.16 Lux / 1/3s	0.16 Lux / 1/4s
Privacy Zone Masking	On/Off (24 positions)			

SONY is a registered trademark of SONY Corporation, Japan. EXview HAD is a registered trademark of SONY Corporation.

AVAILABLE THERMAL CAMERAS						
	Thermal camera 35mm		Thermal camera 25mm		Thermal camera 9mm	
	PAL	NTSC	PAL	NTSC	PAL	NTSC
Detector	Uncooled Vanadium Oxide microbolometer (VOx)					
Resolution	320x256	320x240	320x256	320x240	320x256	320x240
Pixel dimensions	25µm					
Digital Detail Enhancement (DDE)	Yes		Yes		Yes	
Digital zoom	2x, 4x					
Image frequency	8.3fps, 25fps	7.5fps, 30fps	8.3fps, 25fps	7.5fps, 30fps	8.3fps, 25fps	7.5fps, 30fps
Image temperature range	-40°C ÷ +160°C (-40°F ÷ +320°F)					
Horizontal field of view	13°		18°		48°	
Vertical field of view	10°		14°		37°	
F-number	F/1.4		F/1.4		F/1.25	
Thermal sensitivity (NEΔT)	< 50mK at f/1.0					
Man (detection / recognition / identification)	780 / 190 / 97m (2559 / 623 / 318ft)		560 / 140 / 70m (1837 / 459 / 230ft)		205 / 56 / 26m (673 / 184 / 85ft)	
Car (detection / recognition / identification)	2150 / 560 / 280m (7054 / 1837 / 919ft)		1550 / 400 / 200m (5085 / 1312 / 656ft)		590 / 150 / 74m (1936 / 492 / 243ft)	



**HEADQUARTERS ITALY VIDEOTEC S.p.A.**

Via Friuli, 6 - I-36015 Schio (VI) Italy  
 Tel. +39 0445 697411 - Fax +39 0445 697414  
 Email: info@videotec.com

**UK REPRESENTATIVE OFFICE**

Tel./Fax +44 01353 775438 (Sales)  
 Tel. +44 0113 815 0047 (Technical support)  
 Tel. +44 0113 815 0031 (Orders/Shipping dept.)  
 Email: uksales@videotec.com

**FRANCE VIDEOTEC FRANCE S.à.r.l.**

Voie du Futur - Zac des Portes - 27100 Val de Reuil, France  
 Tel. +33 2 32094900 - Fax +33 2 32094901  
 Email: info@videotec-france.com

**AMERICAS VIDEOTEC SECURITY, Inc.**

Gateway Industrial Park - 35, Gateway Drive - Suite 100  
 Plattsburgh, NY 12901 - U.S.A.  
 Tel. +1 518 825 0020 - Fax +1 425 6484289  
 Email: usasales@videotec.com - www.videotec.us

**ASIA PACIFIC VIDEOTEC (HK) Ltd**

Unit C 24 Floor - Gold King Industrial Building  
 35-41, Tai Lin Pai Road - Kwai Chung, NT, Hong Kong  
 Tel. +852 2333 0601 - Fax +852 2311 0026  
 Email: info@videotec.com.hk

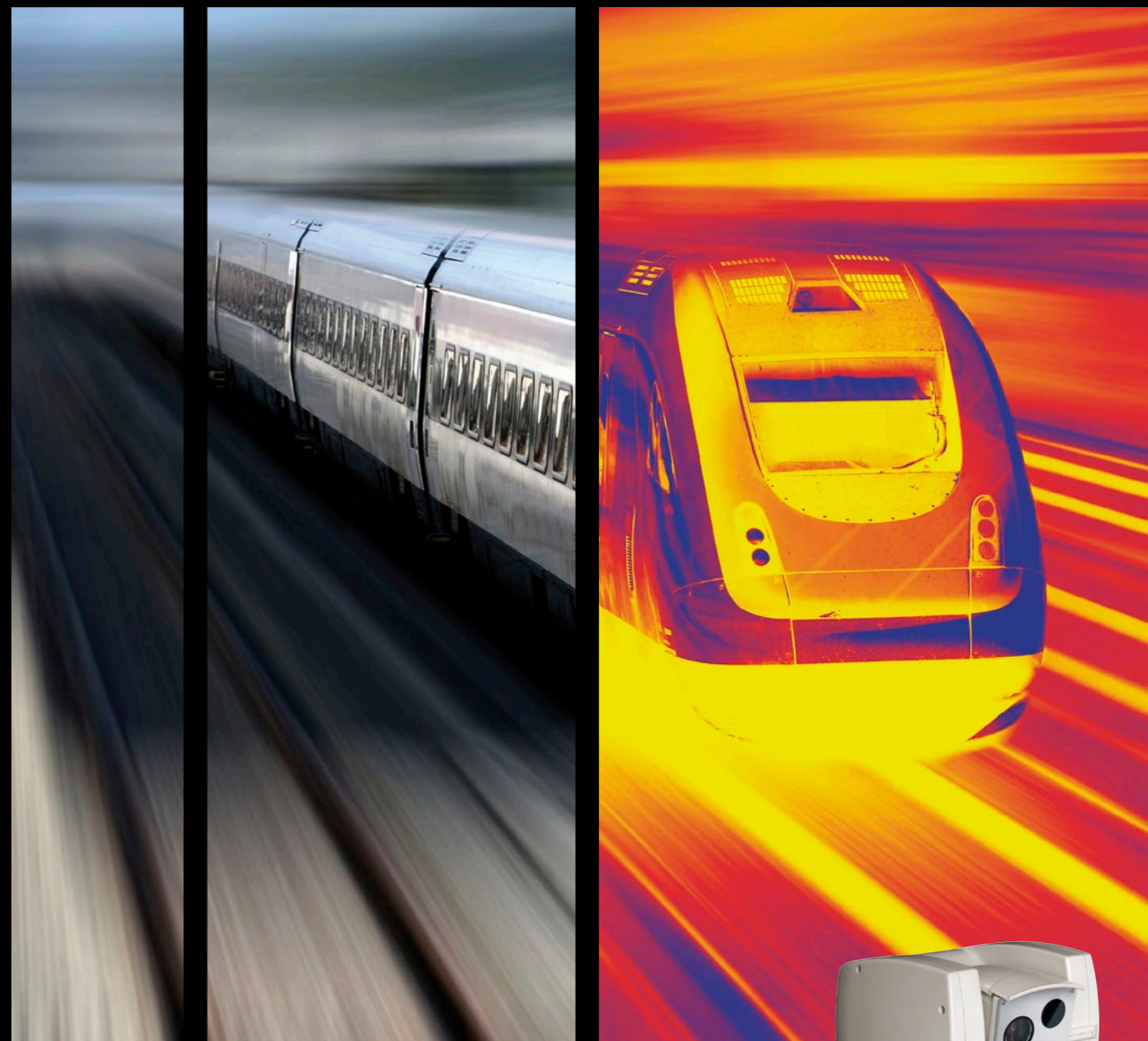
[www.videotec.com](http://www.videotec.com)

DOCUMENT147



ENGLISH

# ULISSE COMPACT THERMAL Integrated positioning unit



*Dual Vision. Real Time.*



# ULISSE COMPACT THERMAL DUAL CAMERA POSITIONING UNIT FOR THERMAL IMAGING



## KEY BENEFITS

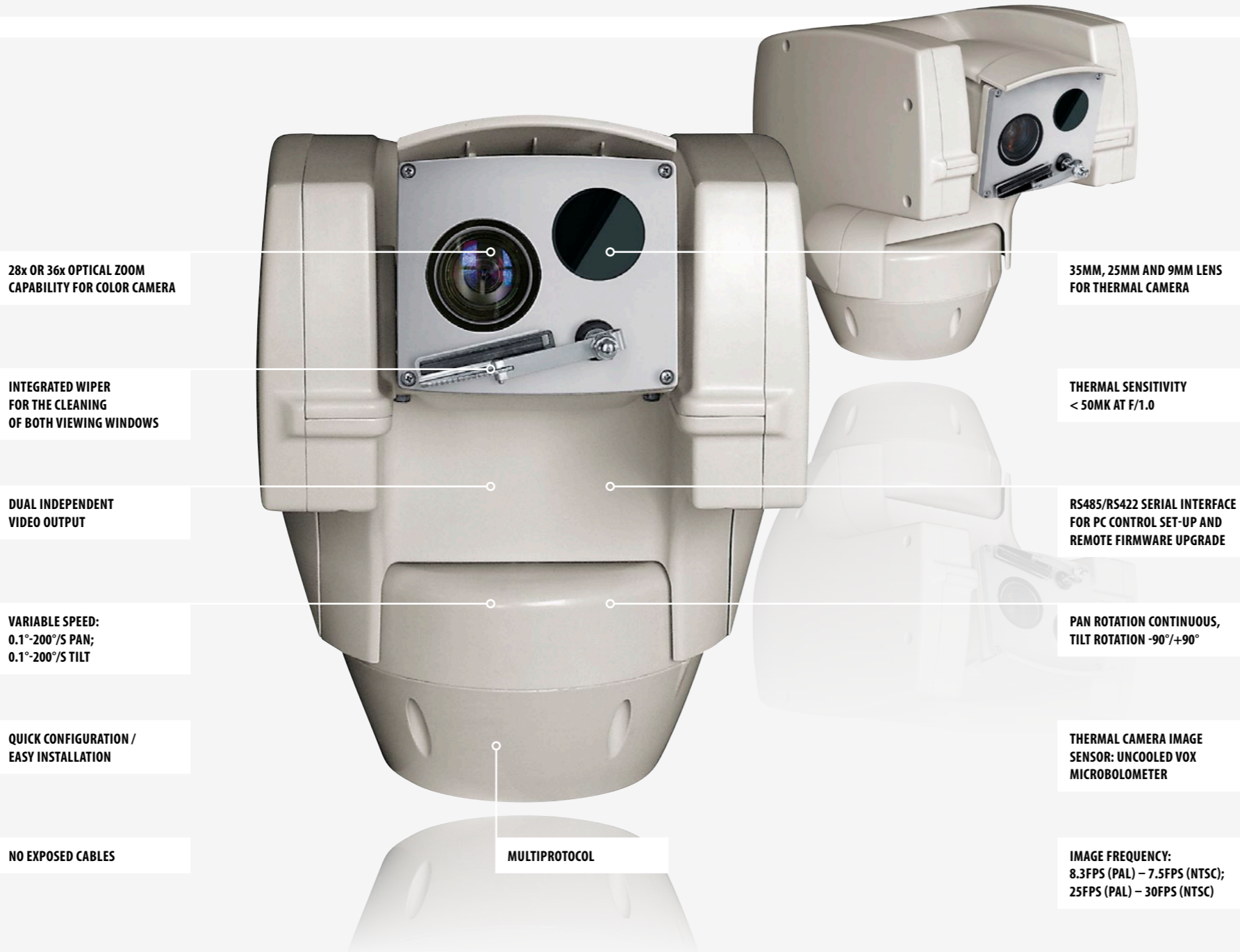
**DUAL VISION, REAL TIME**  
The ULISSE COMPACT THERMAL features two independent video outputs and allows a dual real-time vision on monitors for an optimal monitoring of the area.

**HIGH PERFORMANCE SURVEILLANCE**  
Fast and smooth in motion at 200° per second, the ULISSE COMPACT THERMAL offers 360° continuous rotation, positioning precision and simplified system configuration.

**AUTO-CLEANING**  
The camera housing comes with integrated wiper that cleans both viewing windows.

## APPLICATIONS

Perimeters, Airports, Coastlines, Prisons, Ports.



28x OR 36x OPTICAL ZOOM CAPABILITY FOR COLOR CAMERA

INTEGRATED WIPER FOR THE CLEANING OF BOTH VIEWING WINDOWS

DUAL INDEPENDENT VIDEO OUTPUT

VARIABLE SPEED: 0.1°-200°/S PAN; 0.1°-200°/S TILT

QUICK CONFIGURATION / EASY INSTALLATION

NO EXPOSED CABLES

MULTIPROTOCOL

35MM, 25MM AND 9MM LENS FOR THERMAL CAMERA

THERMAL SENSITIVITY < 50MK AT F/1.0

RS485/RS422 SERIAL INTERFACE FOR PC CONTROL SET-UP AND REMOTE FIRMWARE UPGRADE

PAN ROTATION CONTINUOUS, TILT ROTATION -90°/+90°

THERMAL CAMERA IMAGE SENSOR: UNCOOLED VOX MICROBOLOMETER

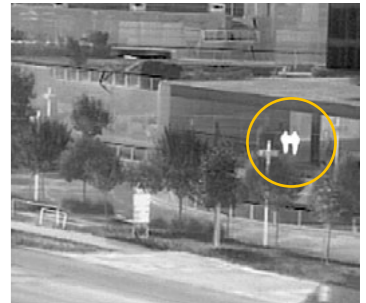
IMAGE FREQUENCY: 8.3FPS (PAL) – 7.5FPS (NTSC); 25FPS (PAL) – 30FPS (NTSC)

## DAY/NIGHT CAMERA

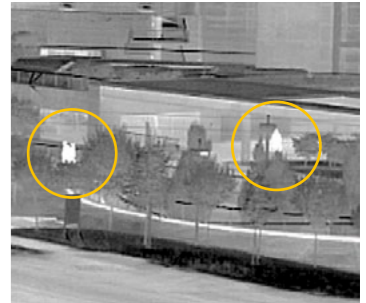
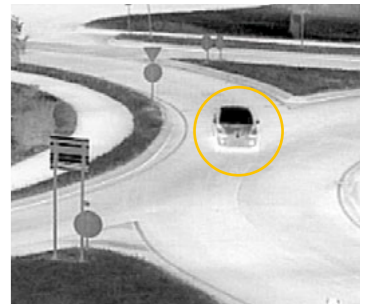
### DAY VISION



## THERMAL CAMERA



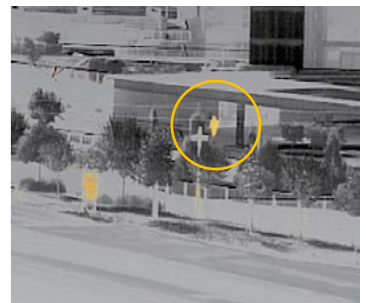
### NIGHT VISION



### SCENE COLORING 12 DIFFERENT SCENE COLORATIONS



### ISOTHERM ANALYSIS COLORIZATION OF OBJECTS ABOVE A SPECIFIED THRESHOLD



## VIDEOTECH CCTV SOLUTION FOR TOTAL DARKNESS

The new ULISSE COMPACT THERMAL offers an integrated solution for total darkness, fog, rain and heavy smoke.

The unit combines an advanced thermal imaging module and a Day/Night zoom camera, factory-aligned and installed within the same enclosure. The two cameras deliver high quality images regardless of lighting conditions.

## FULL VISION

The thermal camera is an Uncooled Vanadium Oxide microbolometer (VOx) and delivers 320x256 thermal video with an image frequency at 8.3fps or 25fps and sensitivity of 50mK. It supports 2x or 4x digital zoom. A choice of different lenses is offered, depending on the detection distance required.

