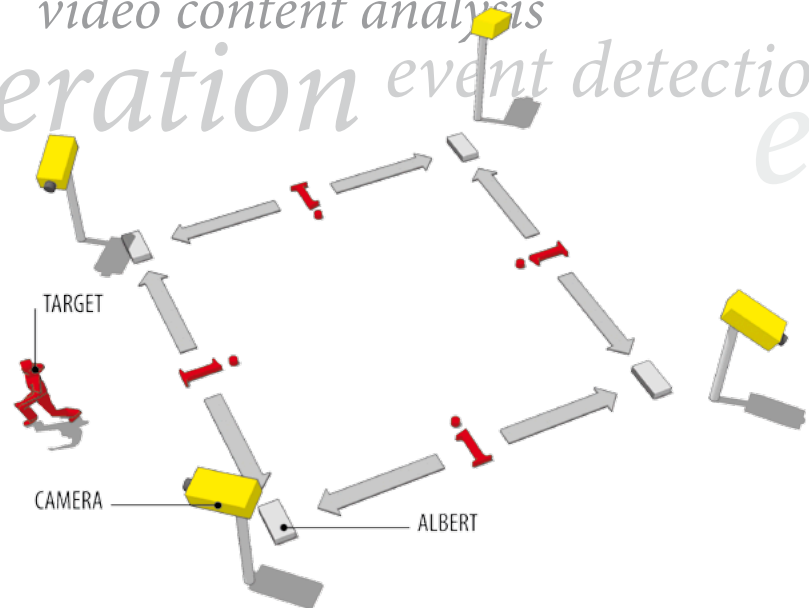
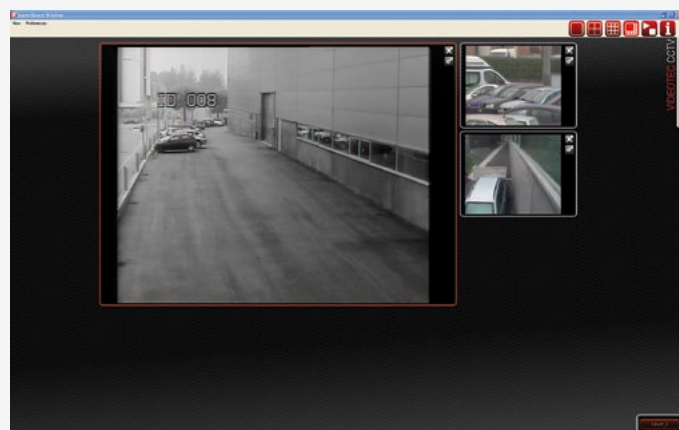


artificial intelligence optimization  
video content analysis  
cooperation event detection  
edge

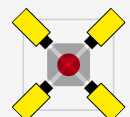


## KEY FEATURES



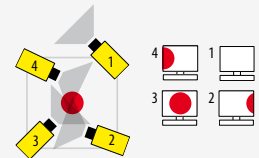
### ■ ASSISTED NAVIGATION

Proposes alternative live views of the event, to provide more perspectives and a better view.



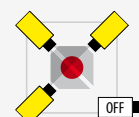
### ■ FOCUS ON THE ALARMED AREA

When a unit detects an event it will send a priority message to the other units. At this point, all the available units will swiftly focus their cameras on the alarmed area.



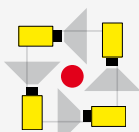
### ■ AUTOMATIC RECORDING

The adjacent cameras will automatically record a number of films of the same event, providing alternative images from a variety of perspectives.



### ■ REDUNDANT SYSTEM

If any unit is tampered with, the adjacent cameras will cover the area of the redundant unit until it has been repaired.



### ■ INTELLIGENT PATROLLING

The units cooperate to achieve optimal cover of the areas, reducing the superimposing of cameras during patrolling.



**HEADQUARTERS ITALY VIDEOTEC S.p.A.**  
Via Friuli, 6 - I-36015 Schio (VI) Italy  
Tel. +39 0445 697411 - Fax +39 0445 697414  
Email: [info@videotec.com](mailto:info@videotec.com)

**UK REPRESENTATIVE OFFICE**  
Tel./Fax +44 01353 775438 (Sales)  
Tel. +44 0113 815 0047 (Technical support)  
Tel. +44 0113 815 0031 (Orders/Shipping dept.)  
Email: [uksales@videotec.com](mailto:uksales@videotec.com)

**FRANCE VIDEOTEC FRANCE S.à.r.l.**  
Voie du Futur - Zac des Portes - 27100 Val de Reuil, France  
Tel. +33 2 32094900 - Fax +33 2 32094901  
Email: [info@videotec-france.com](mailto:info@videotec-france.com)

**AMERICAS VIDEOTEC SECURITY, Inc.**  
Gateway Industrial Park - 35, Gateway Drive - Suite 100  
Plattsburgh, NY 12901 - U.S.A.  
Tel. +1 518 825 0020 - Fax +1 425 6484289  
Email: [usasales@videotec.com](mailto:usasales@videotec.com) - [www.videotec.us](http://www.videotec.us)

**ASIA PACIFIC VIDEOTEC (HK) Ltd**  
Unit C 24 Floor - Gold King Industrial Building  
35-41, Tai Lin Pai Road - Kwai Chung, NT, Hong Kong  
Tel. +852 2333 0601 - Fax +852 2311 0026  
Email: [info@videotec.com.hk](mailto:info@videotec.com.hk)

[www.videotec.com](http://www.videotec.com)



**albert**  
intelligent video armonia.





A new concept has been conceived in the intelligent video systems: **Armonia**. Because when you are dealing with a large number of cameras, they must be able to work and **cooperate** together, just like musicians in an orchestra. And when absolute harmony is achieved, the conductor is no longer necessary.



INTELLIGENT VIDEO SURVEILLANCE

ALBERT is a distributed intelligence system that is based on the cooperation among units combined with a cutting edge movement analysis system. ALBERT is ideal for perimeter surveillance systems and all applications where it may be necessary to achieve **simultaneous monitoring of a number of events**, where operators are required to check a large number of cameras.

- Distributed intelligence
- Decentralised recordings
- Internal recording on HD or external via networks to NAS or PC
- Advanced Outdoor-oriented Event Detector
- Minimum bandwidth, video compression H.264 Main Profile
- Full integration with high speed pan & tilts
- Maximum level of redundancy
- Complete scalability
- Two-way audio and alarm contact ancillary functions



SECURITY

- Self-diagnostic and faulty unit detection system
- The remaining units automatically cover the unmonitored area
- SD slot included for local recordings during Network Failures
- Information on the system status/settings distributed and recoverable from each unit

RETURN ON INVESTMENT

- Professional surveillance software included
- Free software license and updates
- User-friendly system configuration
- Automatic/self-adapting VCA configuration
- Central server not required
- User-friendly scalable system
- Intelligent recording which reduces storage space and the number of recordings on the network

EVENT DETECTION

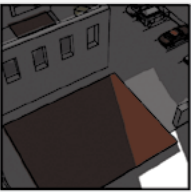
No false alarm in case of:



MOVEMENT OF LEAVES



SHADOW VARIATIONS



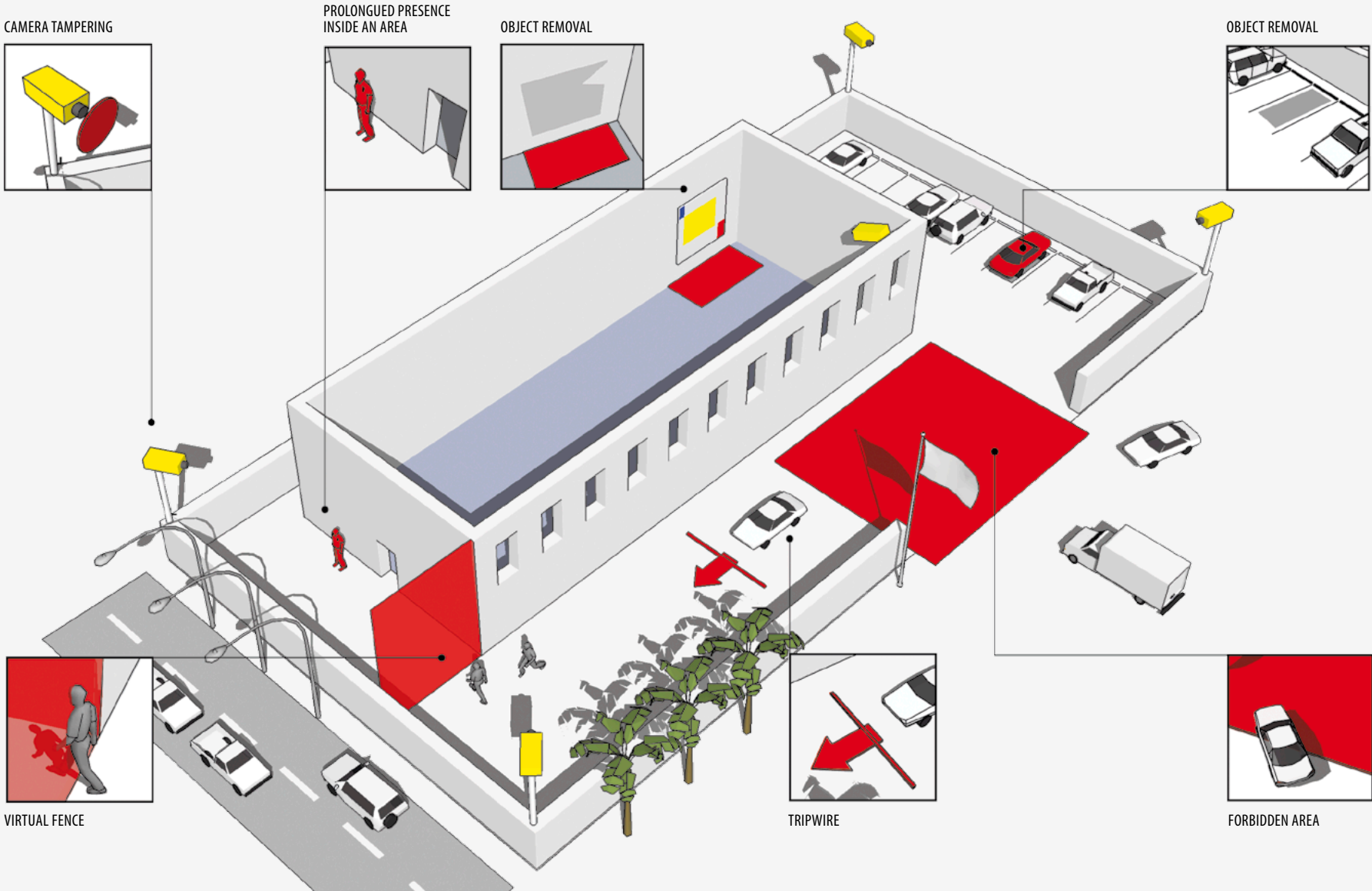
LIGHT / WEATHER VARIATIONS



FLOATING OBJECT MOVEMENTS

VCA RULES

In addition to the self-adapting detection of events, the user can establish **a series of rule**, such as:



EVENT DETECTION: SCREENSHOT SAMPLES



NIGHT-VISION PARKING: FORBIDDEN AREA / INTRUSION.



THE NATURAL WATER MOTION IS CONSIDERED NORMAL, AND IT DOES NOT GIVE ANY FALSE ALARM.



TRAFFIC ROAD: TRIPWIRE.



SEARCH FOR "VIDEOTEC ALBERT" ON YouTube

FEATURES

- **Distributed architecture of Edge servers**
  - No central server required
- **Advanced VCA technology**
  - Integrated Event Detection with self-adapting algorithms; no need to define the parameters during setup
- **Recordings to Hard Disks** (on SD card if network problems occur); NAS supports, recordings to PC, query distributed for video-playback, live streaming and simultaneous recorded streaming
- **Highly reliable system**: the configuration parameters and event logs are distributed throughout the network to ensure maximum redundancy
- **Fault-tolerant system**: the active ALBERT units detect the damaged units and take on their functions until they have been repaired
- **Network faults**: ALBERT automatically records onto the local Hard Disk or the SD card, if there is a network fault, and transmits the recorded videos when the network has been reinstated
- **Easily expandable**
- **Cooperation among the cameras (patented):**
  - Event recall
  - Assisted navigation among cameras
  - Optimised Patrol
  - Automatic recording on adjacent cameras when an event occurs
- **Bandwidth Optimisation:**
  - Only useful videos are transmitted, if requested
  - Main Profile compression H.264 (video streaming RTP/RTSP or RTSP or HTTP)
  - Decentralised recordings
- **Operating software and configuration supplied in-bundle:**
  - Free software license and updates
- VPN Remote Control
- Remote firmware updates
- D1/CIF/QCIF, 25/30fps
- Selectable resolution and frame rate
- 40GB HD (optional)
- PAL/NTSC Video Input
- AAC standard two-way audio
- 2 alarm contacts, 2 alarm inputs
- Ethernet 10/100M
- PTZ support, MACRO, PELCO D™
- API protocols available at [www.videotec.com](http://www.videotec.com)