

Network Surveillance Recorder

First Step Guide

NSR-S10/S20

IPELA

Introduction

This First Step Guide assumes the following conditions and usage for your system, and explains the procedures up until actual operation. Use this document as a guide for setting up the unit before actual operation.

Conditions and usage assumed in this guide

Automatic registration of Sony network cameras, and continuous recording with default configurations.

To connect to an existing network...

Before connecting the unit to a network, be sure to perform the procedure described in “*Connecting to an Existing Network*” (page 12) to configure settings.

When using external e-SATA storage...

Configure settings on the e-SATA storage before connecting it to the unit, and be sure to format the e-SATA storage and add it as a storage location as described in “*Configuring a Storage Location*” (page 8).

For more advanced operations...

If your operating environment or purpose of use requires the more advanced functions and settings available on the NSR, refer to the User’s Guide (PDF) for details.

Examples of advanced operations

- Alarm recording.
- Using audio.
- Using client computers.
- Advanced searching.
- Exporting video or still images to external media.
- Enlarging the image display or performing relay output to external devices in response to sensor inputs from external sources.

Latest information and important notifications

For the operating environment of client computers, supported camera models, and important notifications, refer to Release Note (PDF).

You can download Release Note from the following URL.

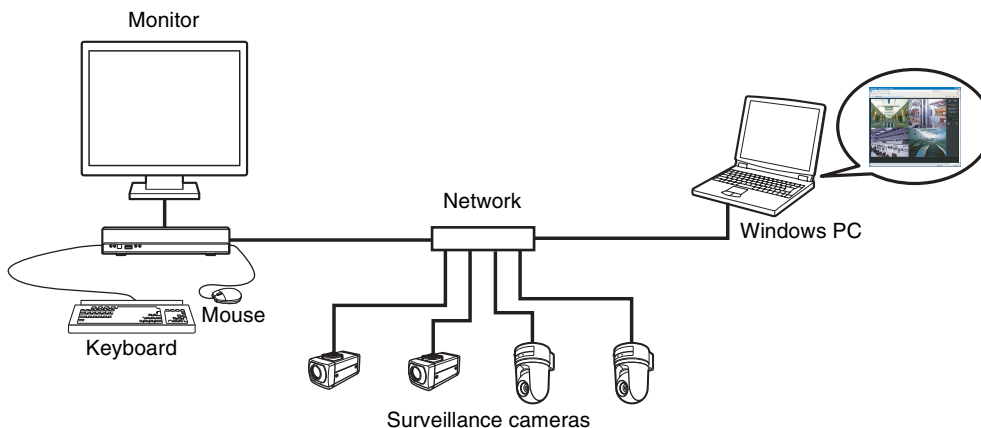
http://www.sony.co.jp/Products/NSR/NSR-S_ReleaseNote_E.pdf

Installation and Setup Procedure

This document provides general explanations on installation and setup of systems that are constructed as follows.

Step 1 Installation	<ul style="list-style-type: none">• Prepare devices• Connect devices• Connect the AC adapter
↓	
Step 2 System Startup and Camera Registration	Search for cameras and register them automatically at NSR startup. Continuous recording starts automatically after the cameras are registered.
↓	
Step 3 Changing the Display Language	The factory default setting for the display language is English. If necessary, you can change the display language.
↓	
Step 4 Setting the System Date and Time	Set the system date and time according to your region of use.
↓	
Step 5 Preparation for Recording	Configure storage locations for recorded data. (when using e-SATA storage)
↓	
Settings complete	
↓	
Step 6 Verification	<ul style="list-style-type: none">• Verify monitoring• Verify image recording and playback

Here, a local network consisting only of the NSR, cameras, and a client computer (when necessary) such as follows is used as an example for explanation.



Caution

When connecting to an existing network, be sure to read “*Connecting to an Existing Network*” (page 12) before connecting the unit to the network.

Notes

- Be sure to read the Safety Regulations in the Installation Manual (separate document) before installing the unit.
- This manual uses screen examples of NSR-S10 in the explanations.

Important

You can download the latest firmware for NSR-S10/S20 from the following URL. For the firmware update procedure, refer to the User's Guide (PDF).
<http://www.sony.co.jp/Products/NSR/NSR-S.zip>

Step 1: Installation

Decide where the unit is to be installed, and then connect all of the equipment.

Preparing Devices

Prepare the following devices based on your intended use.

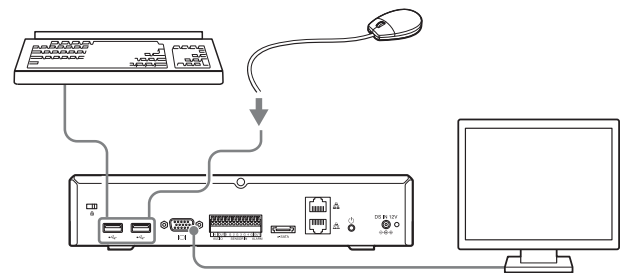
- Monitor
- Monitor cable (if necessary)
- USB keyboard
- USB mouse
- Network camera
- Network switch
- LAN cable

Note

Even if no USB keyboard is connected, the screen-based soft keyboard can be used.

Connecting Each Device

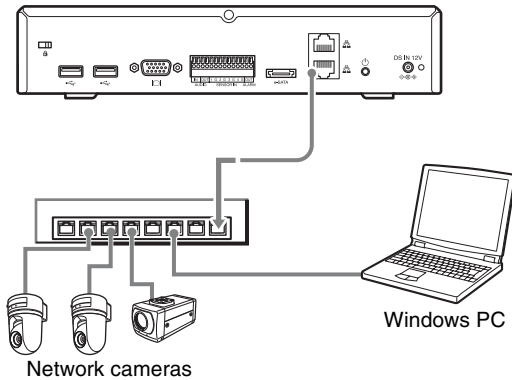
Connect the monitor, USB mouse, and USB keyboard to the appropriate connectors on the front panel of the unit.



Connecting the Network Cameras

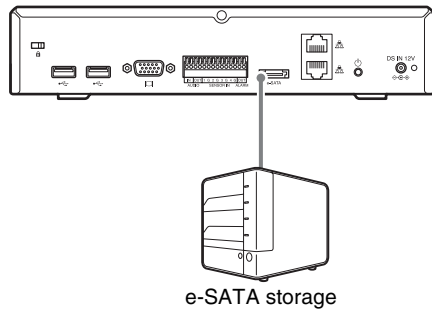
Connect the network cameras and the unit to the same segment of the IP camera network.

When using a client computer, connect it to the same segment of the network.



Connecting e-SATA Storage

Use a e-SATA cable when connecting external e-SATA storage to this unit.



For details on recommended models, refer to the release notes.

Access the following URL to download the release notes.

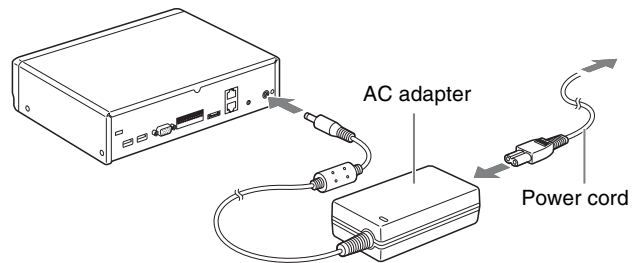
http://www.sony.co.jp/Products/NSR/NSR-S_ReleaseNote_E.pdf

Caution

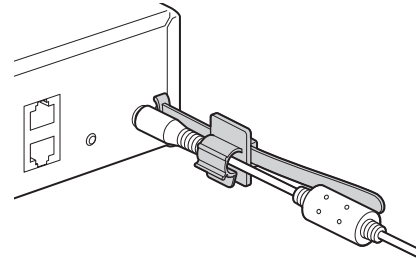
Create RAID volumes and configure other necessary settings on the storage device before connecting it to the unit. After startup, be sure to format the e-SATA storage and add it as a storage location as described in “*Configuring a Storage Location (when using e-SATA storage)*” (page 8).

Connecting the AC adapter

Connect the AC adapter and power cord.



Attach the cable clip to prevent the plug from disconnecting.



Step 2: System Startup and Camera Registration

After turning on the NSR, you can begin monitoring immediately if you register the cameras automatically.

Note

The power comes on automatically when the power cord of the AC adapter is plugged into the power outlet. After the NSR has been turned off either by a screen-based operation or by the power switch on the rear panel, the power can be turned back on by pressing the power switch.

- 1 Plug the power cord of the AC adapter into the power outlet.

The unit beeps, and the POWER LED on the front panel lights green.

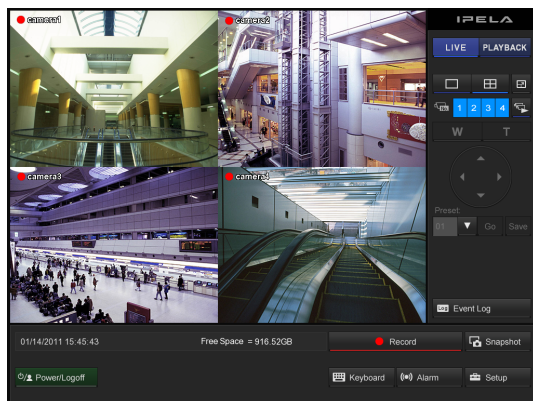
After a minute or two, the message “System Starting, Please Wait...” appears on the monitor.

The “Main” screen appears after the unit starts up.

Notes

- The user ID and password for logging in to the “Main” screen are as follows.
Default user ID: admin
Default password: admin
- For details how to change the auto login setting, refer to “Settings Related to the System” in the User’s Guide (PDF).

Cameras connected to the same segment on the network are automatically located and registered to the NSR, and images from these cameras appear on the “Main” screen.



Continuous recording starts automatically after the cameras are registered.

Notes


- Only Sony cameras will be located and registered.
- Only cameras with IP address settings that have not been changed from factory default conditions will be located and registered. To register cameras with IP addresses that have been changed, return the camera IP address settings to default conditions and restart the NSR.
- When there are multiple cameras connected, the cameras are registered in the order in which they are located, and up to 4 cameras can be registered for NSR-S10 and up to 8 cameras for NSR-S20.

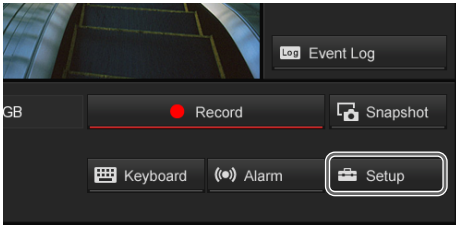
This completes connections.

Proceed to “Step 3: Changing the Display Language.”

Step 3: Changing the Display Language

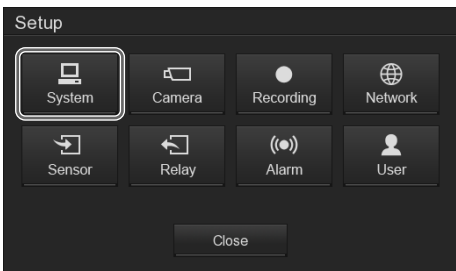
The factory default setting for the display language is English. If necessary, you can change the display language.

- 1 Click  (System Setup) in the lower right corner of the “Monitoring (LIVE)” screen.



The “Setup” screen appears.

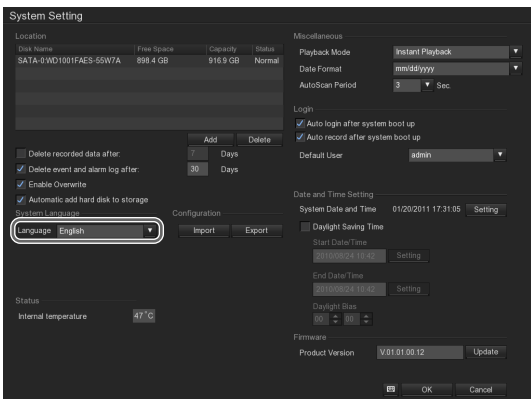
- 2 Click  (System Setting).



The “System Setting” screen appears.

- 3 Select a display language in the [Language] drop-down menu.

The screen display will change after the language is selected.

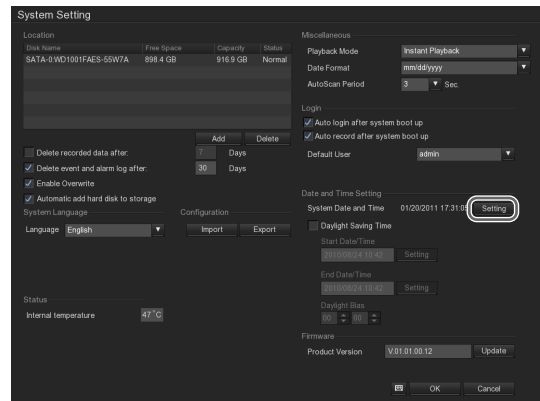


Proceed to “Step 4: Setting the System Date and Time.”

Step 4: Setting the System Date and Time

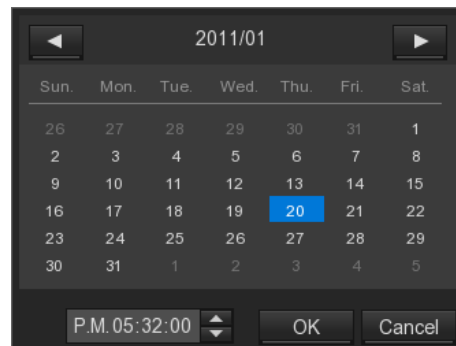
Set the date and time for the unit’s internal clock.

- 1 Click [Setting] to the right of the system date and time in the “System Setting” screen.



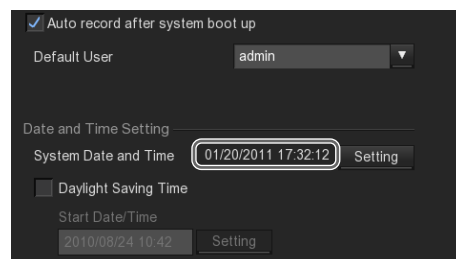
A calendar appears.

- 2 Set the current date and time, and click [OK].



The “System Setting” screen reappears.

- 3 Verify that the date and time to the right of [System Date and Time] are correct.



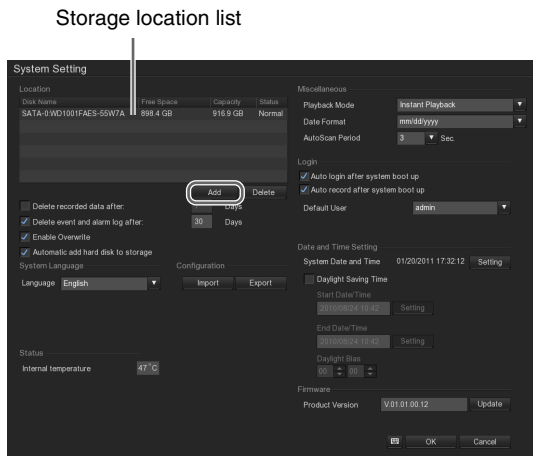
Proceed to “Step 5: Preparation for Recording.”

Step 5: Preparation for Recording

Configuring a Storage Location (when using e-SATA storage)

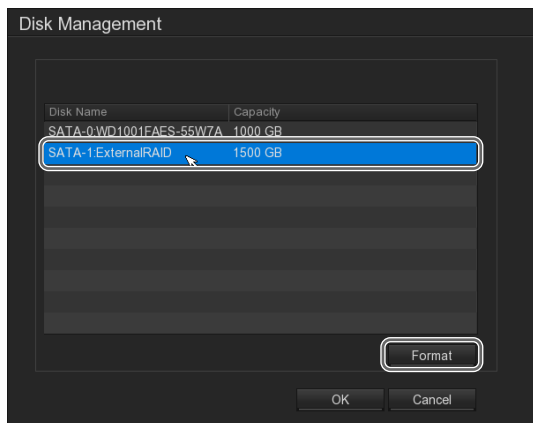
When using external e-SATA storage, format the storage and add it as a storage location as follows.

- 1 Click [Add] under the storage location list in the “System Setting” screen.



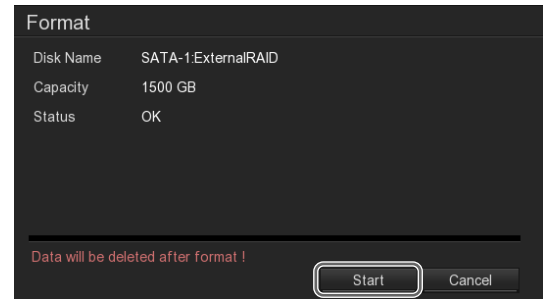
The “Disk Management” screen appears.

- 2 Select the connected e-SATA storage, and click [Format].

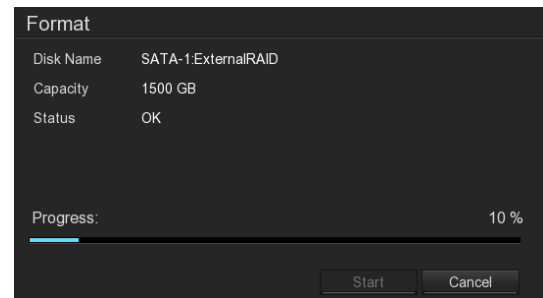


The “Format” screen appears.

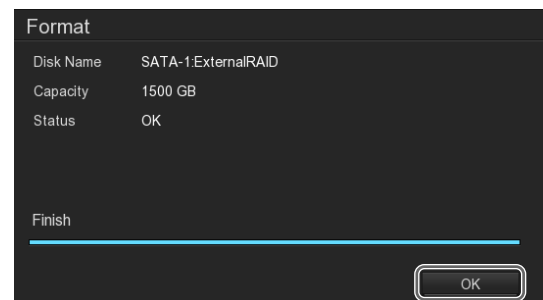
- 3 Click [Start].



Formatting starts.

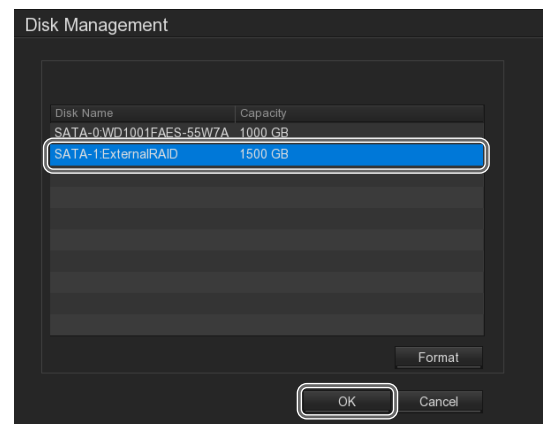


- 4 When formatting is complete, click [OK].

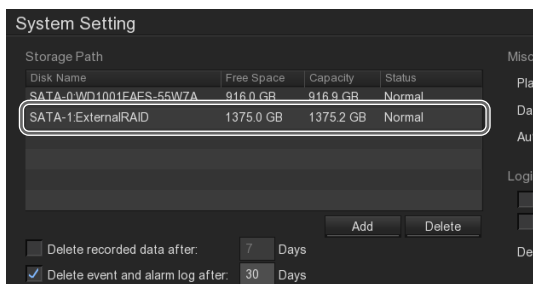


The “Disk Management” screen appears again.

- 5 Select the e-SATA storage, and click [OK].



The e-SATA storage is added as a storage location.



- 6 Click [OK] at the bottom of the “System Setting” screen to return to the “Setup” screen.

This completes configuration.
Proceed to “Step 6: Verification.”

Setting values for automatic registration

Cameras are registered with the following setting values.

For monitoring

	SNC-RZ25		SNC-RZ50		SNT series		1280 × 720 compatible model	1920 × 1080 compatible model
	NTSC	PAL	NTSC	PAL	NTSC	PAL		
Video Size	640 × 480		NTSC 704 × 480 PAL 704 × 576		640 × 480		640 × 480 ¹⁾	640 × 480 ¹⁾
Video Format	MPEG-4		MPEG-4		MPEG-4		MPEG-4	MPEG-4
Frame rate	15		15	12	15	12	15	15
Quality/Bitrate	1,024 kbps		1,024 kbps		1,024 kbps		1,024 kbps	1,024 kbps

1) Cameras that support only 16:9 mode are registered with the default value 640 × 368. For the default value for each camera model, refer to Release Note (PDF).

For monitoring

	SNC-RZ25		SNC-RZ50		SNT series		1280 × 720 compatible model	1920 × 1080 compatible model
	NTSC	PAL	NTSC	PAL	NTSC	PAL		
Video Size	640 × 480		NTSC 704 × 480 PAL 704 × 576		NTSC 720 × 480 PAL 720 × 576		1280 × 720	1920 × 1080
Video Format	MPEG-4		MPEG-4		H.264		H.264	H.264
Frame rate	15		15	12	15	12	10	10
Quality/Bitrate	1,024 kbps		1,024 kbps		1,024 kbps		2,048 kbps	3,072 kbps

Settings that require individual configuration

The following functions are disabled or not configured under automatic registration settings. For details on enabling these functions, refer to the User's Guide (PDF).

- Camera audio
- Sensor input
- Relay output

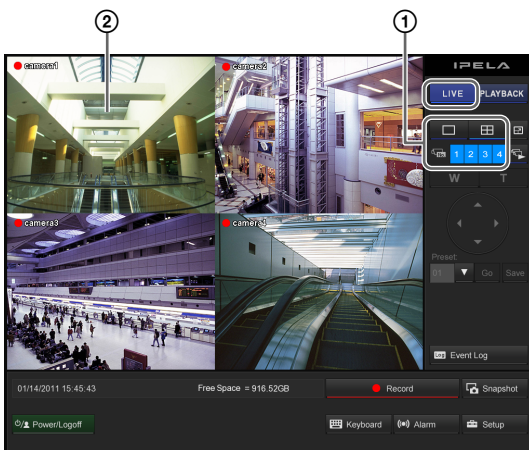
Step 6: Verification

Check whether camera images can be monitored in the “Main” screen, and confirm that the images can be recorded or played back.

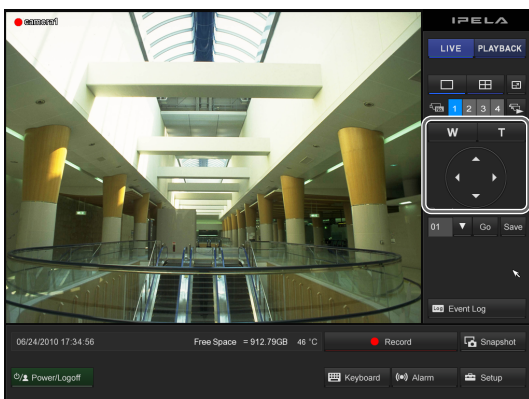
For details on “Main” screen operations, see “*Window Operations Guide*” (page 14) or refer to the User’s Guide (PDF).

Verifying Monitoring

Click [LIVE] in the upper right corner of the screen, and confirm that you can monitor images from the cameras, etc., normally.

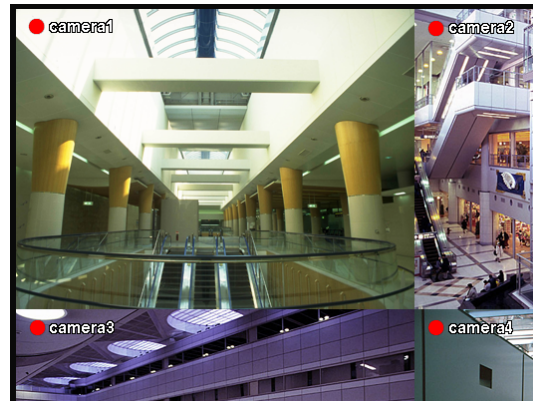


- ① Make changes to the layout, or click on camera IDs and verify that images from registered cameras are displayed.
- ② Click a monitor frame to switch to 1 × 1 (1 screen) layout, and perform pan, tilt, and zoom operations. The layout will switch to 1 screen display when you click a monitor frame or camera ID. During 1 × 1 (1 screen) layout, you can perform digital zoom by right-clicking and dragging the mouse.



Verifying Image Recording and Playback

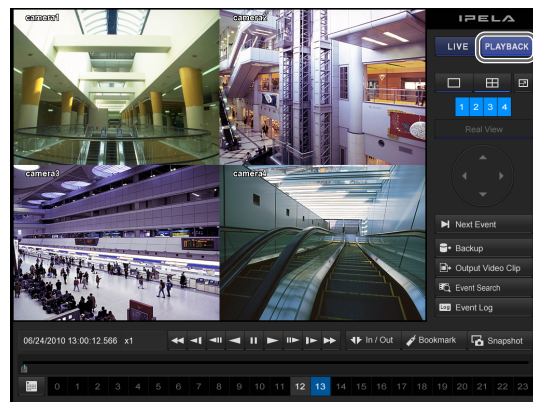
As automatic recording should already be in progress, verify that the “●” icon appears in the monitor frame.



To play back recordings

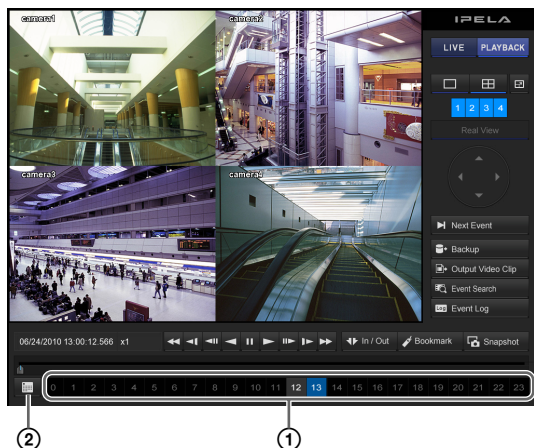
Click [PLAYBACK].

Clicking [PLAYBACK] causes the screen to change to the “Playback” screen, and then automatically begins playback of the most recently recorded image.

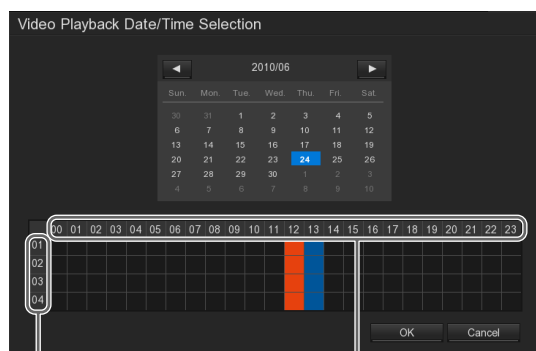


Playing a recording from a specified date and time

You can specify the date time of the recorded image that you want to play at the bottom of the screen.



- ① If you want to play an image that was recorded today, click the corresponding time button.
- ② If you want to play an image from a specified date and time, and click (Date Selection). Specify the date on the calendar that appears, and specify camera IDs and time on the time table. Time periods for which recorded images exist are displayed in . Click a time period to select it, and the selected time period will become .



Camera IDs

Time periods

- ③ Click [OK].
The images are played back.

This concludes basic verification.

To use other NSR features and configure advanced settings

For details on using preset functions to control the camera, enabling alarm recording, and using other NSR features, refer to the User's Guide (PDF).

Connecting to an Existing Network

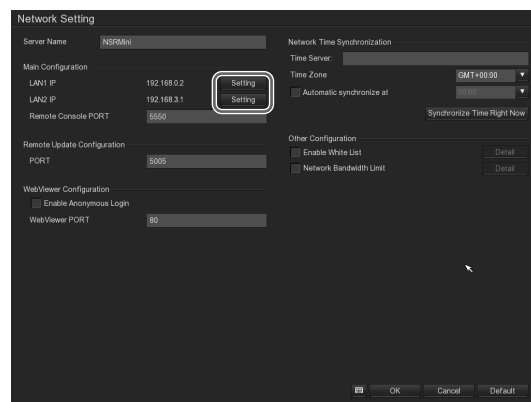
If the IP addresses of the cameras are set to factory default conditions when you connect the NSR to the network, the NSR will automatically change the camera IP addresses and create a network that consists only of the NSR and the cameras.

Be sure to configure the following settings when connecting to an existing network and using the NSR. For details on each operation, refer to the User's Guide (PDF).

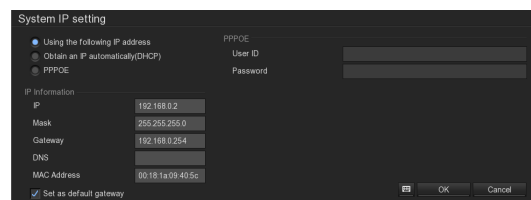
- 1 Turn on the NSR, and log onto the NSR.
- 2 Configure the IP address for the NSR.

Click (Network Setting) in the "Setup" screen, and configure the IP address for the NSR in the "Network Setting" screen that appears.

- ① Click [Setting] for [LAN1 IP] or [LAN2 IP].

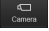


- ② Configure the IP address, subnet mask, and default gateway for the NSR, and the IP address for the DNS.

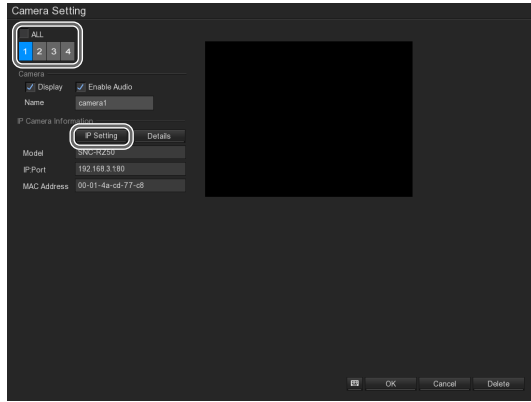


- 3 Connect the NSR to the network.
- 4 Restart the NSR.

5 Register the cameras.

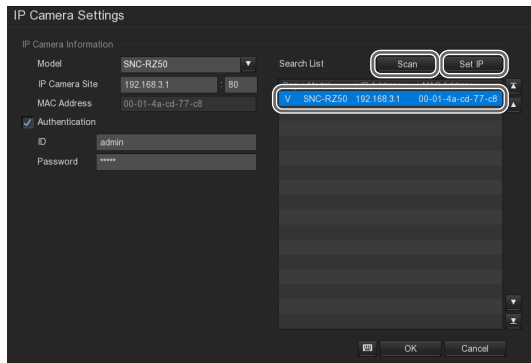
Click  (Camera Setting) in the “Setup” screen, and register cameras in the “Camera Setting” screen that appears.

- ① Select the camera ID to which you want to register the camera, and click [IP Setting] under [IP Camera Information].



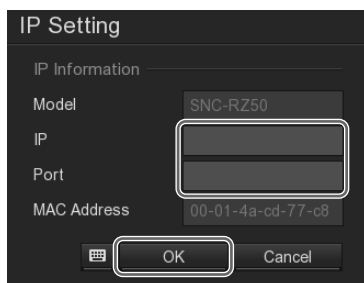
The “IP Camera Settings” screen appears.

- ② Click [Scan] to search for cameras, select the camera you want to register, and then click [Set IP].



The “IP Setting” screen appears.

- ③ Enter the IP address and port number for the camera, and click [OK].

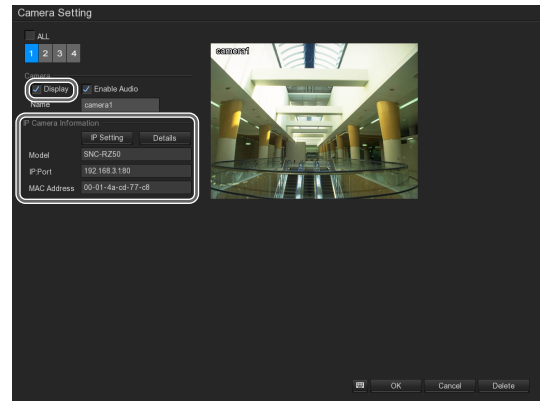


The “IP Camera Settings” screen appears again.

Note

The default port number is “80”.

- ④ Click [OK].
The “Camera Setting” screen appears again.
- ⑤ Verify each setting under [IP Camera Information], and select the [Display] check boxes.
Selecting the [Display] check boxes enables display of the camera images.



Window Operations Guide

“Main” Screen

“Monitoring (LIVE)” screen



Ⓐ During 1 × 1 (1 screen) layout

You can perform digital zoom by right-clicking and dragging the mouse.

Ⓑ Monitor Frame

You can display live images and play back recorded images in the monitor frames. Clicking on one of the monitor frames switches that monitor frame to full screen display.


The following icons appear in monitor frames.



: Recording in progress



: Motion is detected.

When motion is detected while recording is in progress,  appears.




: Audio enabled (grayed out when disabled)


Ⓒ Camera ID

This is used to select the camera for displaying images in the monitor frame.

Ⓓ Layout switch

Switches the layout of the monitor frames.


: This button switches the screen layout to 1 × 1 (1 screen).

: This button switches the screen layout to 2 × 2 (4 screen).

Ⓔ Monitor frame status switch

Switches the monitor window status (live/playback).

Ⓕ (Full Screen)

This displays the current layout (monitor arrangement) over the whole screen. To return to the normal screen, click  that appears in the upper right corner of the screen.

You can also return to the normal screen by pressing the Esc key on the keyboard.

Ⓖ (AutoScan)

This displays the camera images in succession.

Ⓜ Camera Control

If the camera is equipped with pan, tilt, and zoom functions, this controls these functions for the camera images.

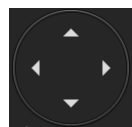
Wide-angle/Telephoto Zoom



This controls zooming between wide-angle and telephoto views.

[W] is for wide-angle (zoom out), and [T] is for telephoto (zoom in).

Pan/Tilt



This moves the camera up, down, left, or right.

Caution

If an analog camera equipped with pan, tilt, and zoom functions is connected to an SNT-EX series unit, these functions of the analog camera cannot be controlled by the NSR.

Preset

This moves the camera to the selected preset position.

Ⓜ Event Log (Event Log)

This displays the event/operation/system/network history.

Ⓜ Snapshot (Save)

This exports the image currently displayed as a still image file.

Still images are exported in JPEG format.

Ⓜ Setup (System Setup)

This displays the “Setup” screen.

Ⓜ Alarm (Alarm Status)

This displays the status and history of alarms.

To release an alarm condition, click this button and then click [Reset] in the “Alarm Status” screen that appears.

Ⓜ Keyboard (Keyboard)

This displays the soft keyboard that is used to input text.

Ⓜ Record (Record)

This starts or stops the recording of camera images according to the recording mode configured in the “Recording Setting” screen.

Under default settings, recording starts automatically at system startup.

Ⓜ Power/Logout (Exit)

This allows you to reboot, power off, log off, or log on as a different user.

Ⓜ Status display

This displays the current date and time, and the current hard disk capacity.

“Playback” screen



A Real View

This displays images from cameras in real size (dot by dot).
This function is only available when the video size of the camera is 1280 × 720 or higher.
If the entire area of the image is not displayed in Real View mode, use the pan and tilt buttons to the right to move the displayed area.

B Next Event (Find Next)

This is used to jump to the next event in the recorded data.
This function is enabled when using the event search function.

C Backup (Backup)

This is used to back up recorded images as files to USB flash memory, etc.

Caution

Do not connect mass storage devices other than USB memory devices to the unit.

D Output Video Clip (Export)

This is used to export recorded images as proprietary format files (.dvr) to USB flash memory.

E Event Search (Event Search)

This is used to search for recorded images based on event log records (sensor input, movement detection, loss of video signal, etc.).

To use the **Next Event** (Find Next) function, deselect the [Output Event List] check box in the “Event Search Setting” screen and perform the search.

F Event Log (Event log)

This displays the event/operation/system/network history.

G In / Out (Set Segment)

This is used to specify the portion of a recorded image to be exported.
Click this button to set the current playback position as the start point or end point.
If you want to change the start point and end point after setting them, click **In / Out** again to clear the settings.

H Bookmark (Bookmark)

This is used to set a bookmark at the current playback position.

I Playback control buttons

These are used when playing back recorded images.

Fast Rewind

Use this button for fast rewind. (2x, 4x, 8x, 16x, 32x, 64x speed)

Slow Rewind

Use this button for slow rewind. (1/2 speed, 1/4 speed)

Previous

Use this button to go back one frame.

(Rewind)

Use this button to play recorded images in reverse.

(Pause)

Use this button to pause playback.

(Play)

Use this button for playback. (1x speed).

(Next)

Use this button to advance one frame.

(Slow Forward)

Use this button for slow forward. (1/2 speed, 1/4 speed)

(Fast Forward)

Use this button for fast forward. (2x, 4x, 8x, 16x, 32x, 64x speed)

Playback slider

This displays the current playback position.

You can also move the slider to change the position.


Time button

This is used to play back images that were recorded today.

The numbers indicate the time.

Date and time setting button

This is used when searching for a recording from a specified date and time.

Clicking  (Date Selection) causes the calendar to appear, which can then be used to specify the date.

Status display

This displays the date and time that an image was recorded, and the playback speed.

Concerning GPL-LPGL

The attached GPL/LGPL conditions inform the USER about their rights for procuring, altering, and redistributing the software source code.

This source code is provided on the Web.

Access the following URL to download the code.

<http://www.sony.net/Products/Linux/>

Sony does not answer questions about the data in the source code.

MPEG-4 Video Patent Portfolio License

THIS PRODUCT IS LICENSED UNDER THE MPEG-4 VISUAL PATENT PORTFOLIO LICENSE FOR THE PERSONAL AND NON-COMMERCIAL USE OF A CONSUMER FOR

(i) ENCODING VIDEO IN COMPLIANCE WITH THE MPEG-4 VISUAL STANDARD (“MPEG-4 VIDEO”)

AND/OR

(ii) DECODING MPEG-4 VIDEO THAT WAS ENCODED BY A CONSUMER ENGAGED IN A PERSONAL AND NON-COMMERCIAL ACTIVITY AND/OR WAS OBTAINED FROM A VIDEO PROVIDER LICENSED BY MPEG LA TO PROVIDE MPEG-4 VIDEO.

NO LICENSE IS GRANTED OR SHALL BE IMPLIED FOR ANY OTHER USE. ADDITIONAL INFORMATION INCLUDING THAT RELATING TO PROMOTIONAL, INTERNAL AND COMMERCIAL USES AND LICENSING MAY BE OBTAINED FROM MPEG LA, LLC. SEE [HTTP://WWW.MPEGLA.COM](http://www.mpegla.com)

GNU GENERAL PUBLIC LICENSE

Version 2, June 1991

Copyright (C) 1989, 1991 Free Software Foundation, Inc., 51 Franklin Street, Fifth Floor, Boston, MA 02110-1301 USA

Everyone is permitted to copy and distribute verbatim copies of this license document, but changing it is not allowed.

Preamble

The licenses for most software are designed to take away your freedom to share and change it. By contrast, the GNU General Public License is intended to guarantee your freedom to share and change free software--to make sure the software is free for all its users. This General Public License applies to most of the Free Software Foundation's software and to any other program whose authors commit to using it. (Some other Free Software Foundation software is covered by the GNU Lesser General Public License instead.) You can apply it to your programs, too.

When we speak of free software, we are referring to freedom, not price. Our General Public Licenses are designed to make sure that you have the freedom to distribute copies of free software (and charge for this service if you wish), that you receive source code or can get it if you want it, that you can change the software or use pieces of it in new free programs; and that you know you can do these things.

To protect your rights, we need to make restrictions that forbid anyone to deny you these rights or to ask you to surrender the rights.

These restrictions translate to certain responsibilities for you if you distribute copies of the software, or if you modify it.

For example, if you distribute copies of such a program, whether gratis or for a fee, you must give the recipients all the rights that you have. You must make sure that they, too, receive or can get the source code. And you must show them these terms so they know their rights.

We protect your rights with two steps: (1) copyright the software, and (2) offer you this license which gives you legal permission to copy, distribute and/or modify the software.

Also, for each author's protection and ours, we want to make certain that everyone understands that there is no warranty for this free software. If the software is modified by someone else and passed on, we want its recipients to know that what they have is not the original, so that any problems introduced by others will not reflect on the original authors' reputations.

Finally, any free program is threatened constantly by software patents. We wish to avoid the danger that redistributors of a free program will individually obtain patent licenses, in effect making the program proprietary. To prevent this, we have made it clear that any patent must be licensed for everyone's free use or not licensed at all.

The precise terms and conditions for copying, distribution and modification follow.

TERMS AND CONDITIONS FOR COPYING, DISTRIBUTION AND MODIFICATION

0. This License applies to any program or other work which contains a notice placed by the copyright holder saying it may be distributed under the terms of this General Public License. The "Program", below, refers to any such program or work, and a "work based on the Program" means either the Program or any derivative work under copyright law: that is to say, a work containing the Program or a portion of it, either verbatim or with modifications and/or translated into another language. (Hereinafter, translation is included without limitation in the term "modification".) Each licensee is addressed as "you".

Activities other than copying, distribution and modification are not covered by this License; they are outside its scope. The act of running the Program is not restricted, and the output from the Program is covered only if its contents constitute a work based on the Program (independent of having been made by running the Program).

Whether that is true depends on what the Program does.

1. You may copy and distribute verbatim copies of the Program's source code as you receive it, in any medium, provided that you conspicuously and appropriately publish on each copy an appropriate copyright notice and disclaimer of warranty; keep intact all the notices that refer to this License and to the absence of any warranty; and give any other recipients of the Program a copy of this License along with the Program.

You may charge a fee for the physical act of transferring a copy, and you may at your option offer warranty protection in exchange for a fee.

2. You may modify your copy or copies of the Program or any portion of it, thus forming a work based on the Program, and copy and distribute such modifications or work under the terms of Section 1 above, provided that you also meet all of these conditions:
 - a) You must cause the modified files to carry prominent notices stating that you changed the files and the date of any change.
 - b) You must cause any work that you distribute or publish, that in whole or in part contains or is derived from the Program or any part thereof, to be licensed as a whole at no charge to all third parties under the terms of this License.
 - c) If the modified program normally reads commands interactively when run, you must cause it, when started running for such interactive use in the most ordinary way, to print or display an announcement including an appropriate copyright notice and a notice that there is no warranty (or else, saying that you provide a warranty) and that users may redistribute the program under these conditions, and telling the user how to view a copy of this License. (Exception: if the Program itself is interactive but does not normally print such an announcement, your work based on the Program is not required to print an announcement.)

These requirements apply to the modified work as a whole. If identifiable sections of that work are not derived from the Program, and can be reasonably considered independent and separate works in themselves, then this License, and its terms, do not apply to those sections when you distribute them as separate works. But when you distribute the same sections as part of a whole which is a work based on the Program, the distribution of the whole must be on the terms of this License, whose permissions for other licensees extend to the entire whole, and thus to each and every part regardless of who wrote it.

Thus, it is not the intent of this section to claim rights or contest your rights to work written entirely by you; rather, the intent is to exercise the right to control the distribution of derivative or collective works based on the Program.

In addition, mere aggregation of another work not based on the Program with the Program (or with a work based

on the Program) on a volume of a storage or distribution medium does not bring the other work under the scope of this License.

3. You may copy and distribute the Program (or a work based on it, under Section 2) in object code or executable form under the terms of Sections 1 and 2 above provided that you also do one of the following:
 - a) Accompany it with the complete corresponding machine-readable source code, which must be distributed under the terms of Sections 1 and 2 above on a medium customarily used for software interchange; or,
 - b) Accompany it with a written offer, valid for at least three years, to give any third party, for a charge no more than your cost of physically performing source distribution, a complete machine-readable copy of the corresponding source code, to be distributed under the terms of Sections 1 and 2 above on a medium customarily used for software interchange; or,
 - c) Accompany it with the information you received as to the offer to distribute corresponding source code. (This alternative is allowed only for noncommercial distribution and only if you received the program in object code or executable form with such an offer, in accord with Subsection b above.)

The source code for a work means the preferred form of the work for making modifications to it. For an executable work, complete source code means all the source code for all modules it contains, plus any associated interface definition files, plus the scripts used to control compilation and installation of the executable. However, as a special exception, the source code distributed need not include anything that is normally distributed (in either source or binary form) with the major components (compiler, kernel, and so on) of the operating system on which the executable runs, unless that component itself accompanies the executable.

If distribution of executable or object code is made by offering access to copy from a designated place, then offering equivalent access to copy the source code from the same place counts as distribution of the source code, even though third parties are not compelled to copy the source along with the object code.

4. You may not copy, modify, sublicense, or distribute the Program except as expressly provided under this License. Any attempt otherwise to copy, modify, sublicense or distribute the Program is void, and will automatically terminate your rights under this License. However, parties who have

received copies, or rights, from you under this License will not have their licenses terminated so long as such parties remain in full compliance.

5. You are not required to accept this License, since you have not signed it. However, nothing else grants you permission to modify or distribute the Program or its derivative works. These actions are prohibited by law if you do not accept this License. Therefore, by modifying or distributing the Program (or any work based on the Program), you indicate your acceptance of this License to do so, and all its terms and conditions for copying, distributing or modifying the Program or works based on it.
6. Each time you redistribute the Program (or any work based on the Program), the recipient automatically receives a license from the original licensor to copy, distribute or modify the Program subject to these terms and conditions. You may not impose any further restrictions on the recipients' exercise of the rights granted herein. You are not responsible for enforcing compliance by third parties to this License.
7. If, as a consequence of a court judgment or allegation of patent infringement or for any other reason (not limited to patent issues), conditions are imposed on you (whether by court order, agreement or otherwise) that contradict the conditions of this License, they do not excuse you from the conditions of this License. If you cannot distribute so as to satisfy simultaneously your obligations under this License and any other pertinent obligations, then as a consequence you may not distribute the Program at all. For example, if a patent license would not permit royalty-free redistribution of the Program by all those who receive copies directly or indirectly through you, then the only way you could satisfy both it and this License would be to refrain entirely from distribution of the Program.

If any portion of this section is held invalid or unenforceable under any particular circumstance, the balance of the section is intended to apply and the section as a whole is intended to apply in other circumstances.

It is not the purpose of this section to induce you to infringe any patents or other property right claims or to contest validity of any such claims; this section has the sole purpose of protecting the integrity of the free software distribution system, which is implemented by public license practices. Many people have made generous contributions to the wide range of software distributed through that system in reliance on consistent

application of that system; it is up to the author/donor to decide if he or she is willing to distribute software through any other system and a licensee cannot impose that choice.

This section is intended to make thoroughly clear what is believed to be a consequence of the rest of this License.

8. If the distribution and/or use of the Program is restricted in certain countries either by patents or by copyrighted interfaces, the original copyright holder who places the Program under this License may add an explicit geographical distribution limitation excluding those countries, so that distribution is permitted only in or among countries not thus excluded. In such case, this License incorporates the limitation as if written in the body of this License.
9. The Free Software Foundation may publish revised and/or new versions of the General Public License from time to time. Such new versions will be similar in spirit to the present version, but may differ in detail to address new problems or concerns.

Each version is given a distinguishing version number. If the Program specifies a version number of this License which applies to it and “any later version”, you have the option of following the terms and conditions either of that version or of any later version published by the Free Software Foundation. If the Program does not specify a version number of this License, you may choose any version ever published by the Free Software Foundation.

10. If you wish to incorporate parts of the Program into other free programs whose distribution conditions are different, write to the author to ask for permission. For software which is copyrighted by the Free Software Foundation, write to the Free Software Foundation; we sometimes make exceptions for this. Our decision will be guided by the two goals of preserving the free status of all derivatives of our free software and of promoting the sharing and reuse of software generally.

NO WARRANTY

11. BECAUSE THE PROGRAM IS LICENSED FREE OF CHARGE, THERE IS NO WARRANTY FOR THE PROGRAM, TO THE EXTENT PERMITTED BY APPLICABLE LAW. EXCEPT WHEN OTHERWISE STATED IN WRITING THE COPYRIGHT HOLDERS AND/OR OTHER PARTIES PROVIDE THE PROGRAM "AS IS" WITHOUT WARRANTY OF ANY KIND, EITHER EXPRESSED OR IMPLIED, INCLUDING, BUT NOT LIMITED TO, THE IMPLIED WARRANTIES OF MERCHANTABILITY AND FITNESS FOR A PARTICULAR PURPOSE. THE ENTIRE RISK AS TO THE QUALITY AND PERFORMANCE OF THE PROGRAM IS WITH YOU. SHOULD THE PROGRAM PROVE DEFECTIVE, YOU ASSUME THE COST OF ALL NECESSARY SERVICING, REPAIR OR CORRECTION.
12. IN NO EVENT UNLESS REQUIRED BY APPLICABLE LAW OR AGREED TO IN WRITING WILL ANY COPYRIGHT HOLDER, OR ANY OTHER PARTY WHO MAY MODIFY AND/OR REDISTRIBUTE THE PROGRAM AS PERMITTED ABOVE, BE LIABLE TO YOU FOR DAMAGES, INCLUDING ANY GENERAL, SPECIAL, INCIDENTAL OR CONSEQUENTIAL DAMAGES ARISING OUT OF THE USE OR INABILITY TO USE THE PROGRAM (INCLUDING BUT NOT LIMITED TO LOSS OF DATA OR DATA BEING RENDERED INACCURATE OR LOSSES SUSTAINED BY YOU OR THIRD PARTIES OR A FAILURE OF THE PROGRAM TO OPERATE WITH ANY OTHER PROGRAMS), EVEN IF SUCH HOLDER OR OTHER PARTY HAS BEEN ADVISED OF THE POSSIBILITY OF SUCH DAMAGES.

END OF TERMS AND CONDITIONS

How to Apply These Terms to Your New Programs

If you develop a new program, and you want it to be of the greatest possible use to the public, the best way to achieve this is to make it free software which everyone can redistribute and change under these terms.

To do so, attach the following notices to the program. It is safest to attach them to the start of each source file to most effectively convey the exclusion of warranty; and each file should have at least the "copyright" line and a pointer to where the full notice is found.

<one line to give the program's name and a brief idea of what it does.>
Copyright (C) <year> <name of author>

This program is free software; you can redistribute it and/or modify it under the terms of the GNU General Public License as published by the Free Software Foundation; either version 2 of the License, or (at your option) any later version.

This program is distributed in the hope that it will be useful, but WITHOUT ANY WARRANTY; without even the implied warranty of MERCHANTABILITY or FITNESS FOR A PARTICULAR PURPOSE. See the GNU General Public License for more details.

You should have received a copy of the GNU General Public License along with this program; if not, write to the Free Software Foundation, Inc., 51 Franklin Street, Fifth Floor, Boston, MA 02110-1301 USA.

Also add information on how to contact you by electronic and paper mail.

If the program is interactive, make it output a short notice like this when it starts in an interactive mode:

Gnomovision version 69, Copyright (C) year name of author
Gnomovision comes with ABSOLUTELY NO WARRANTY; for details type `show w'.
This is free software, and you are welcome to redistribute it under certain conditions; type `show c' for details.

The hypothetical commands `show w' and `show c' should show the appropriate parts of the General Public

License. Of course, the commands you use may be called something other than ``show w'` and ``show c'`; they could even be mouse-clicks or menu items--whatever suits your program.

You should also get your employer (if you work as a programmer) or your school, if any, to sign a "copyright disclaimer" for the program, if necessary. Here is a sample; alter the names:

Yoyodyne, Inc., hereby disclaims all copyright interest in the program ``Gnomovision'` (which makes passes at compilers) written by James Hacker.

<signature of Ty Coon>, 1 April 1989
Ty Coon, President of Vice

This General Public License does not permit incorporating your program into proprietary programs. If your program is a subroutine library, you may consider it more useful to permit linking proprietary applications with the library. If this is what you want to do, use the GNU Lesser General Public License instead of this License.

GNU LESSER GENERAL PUBLIC LICENSE

Version 2.1, February 1999

Copyright (C) 1991, 1999 Free Software Foundation, Inc. 51 Franklin Street, Fifth Floor, Boston, MA 02110-1301 USA

Everyone is permitted to copy and distribute verbatim copies of this license document, but changing it is not allowed.

[This is the first released version of the Lesser GPL. It also counts as the successor of the GNU Library Public License, version 2, hence the version number 2.1.]

Preamble

The licenses for most software are designed to take away your freedom to share and change it. By contrast, the GNU General Public Licenses are intended to guarantee your freedom to share and change free software--to make sure the software is free for all its users.

This license, the Lesser General Public License, applies to some specially designated software packages--typically libraries--of the Free Software Foundation and other authors who decide to use it. You can use it too, but we suggest you first think carefully about whether this license or the ordinary General Public License is the better strategy to use in any particular case, based on the explanations below.

When we speak of free software, we are referring to freedom of use, not price. Our General Public Licenses are designed to make sure that you have the freedom to distribute copies of free software (and charge for this service if you wish); that you receive source code or can get it if you want it; that you can change the software and use pieces of it in new free programs; and that you are informed that you can do these things.

To protect your rights, we need to make restrictions that forbid distributors to deny you these rights or to ask you to surrender these rights. These restrictions translate to certain responsibilities for you if you distribute copies of the library or if you modify it.

For example, if you distribute copies of the library, whether gratis or for a fee, you must give the recipients all the rights that we gave you. You must make sure that they, too, receive or can get the source code. If you link

other code with the library, you must provide complete object files to the recipients, so that they can relink them with the library after making changes to the library and recompiling it. And you must show them these terms so they know their rights.

We protect your rights with a two-step method: (1) we copyright the library, and (2) we offer you this license, which gives you legal permission to copy, distribute and/or modify the library.

To protect each distributor, we want to make it very clear that there is no warranty for the free library. Also, if the library is modified by someone else and passed on, the recipients should know that what they have is not the original version, so that the original author's reputation will not be affected by problems that might be introduced by others.

Finally, software patents pose a constant threat to the existence of any free program. We wish to make sure that a company cannot effectively restrict the users of a free program by obtaining a restrictive license from a patent holder. Therefore, we insist that any patent license obtained for a version of the library must be consistent with the full freedom of use specified in this license.

Most GNU software, including some libraries, is covered by the ordinary GNU General Public License. This license, the GNU Lesser General Public License, applies to certain designated libraries, and is quite different from the ordinary General Public License. We use this license for certain libraries in order to permit linking those libraries into non-free programs.

When a program is linked with a library, whether statically or using a shared library, the combination of the two is legally speaking a combined work, a derivative of the original library. The ordinary General Public License therefore permits such linking only if the entire combination fits its criteria of freedom. The Lesser General Public License permits more lax criteria for linking other code with the library.

We call this license the “Lesser” General Public License because it does Less to protect the user's freedom than the ordinary General Public License. It also provides other free software developers Less of an advantage over competing non-free programs. These disadvantages are the reason we use the ordinary General Public License for many libraries. However, the Lesser license provides advantages in certain special circumstances.

For example, on rare occasions, there may be a special need to encourage the widest possible use of a certain library, so that it becomes a de-facto standard. To achieve this, non-free programs must be allowed to use the library. A more frequent case is that a free library does the same job as widely used non-free libraries. In this case, there is little to gain by limiting the free library to free software only, so we use the Lesser General Public License.

In other cases, permission to use a particular library in non-free programs enables a greater number of people to use a large body of free software. For example, permission to use the GNU C Library in non-free programs enables many more people to use the whole GNU operating system, as well as its variant, the GNU/Linux operating system.

Although the Lesser General Public License is Less protective of the users' freedom, it does ensure that the user of a program that is linked with the Library has the freedom and the wherewithal to run that program using a modified version of the Library.

The precise terms and conditions for copying, distribution and modification follow. Pay close attention to the difference between a “work based on the library” and a “work that uses the library”. The former contains code derived from the library, whereas the latter must be combined with the library in order to run.

TERMS AND CONDITIONS FOR COPYING, DISTRIBUTION AND MODIFICATION

0. This License Agreement applies to any software library or other program which contains a notice placed by the copyright holder or other authorized party saying it may be distributed under the terms of this Lesser General Public License (also called “this License”). Each licensee is addressed as “you”.

A “library” means a collection of software functions and/or data prepared so as to be conveniently linked with application programs (which use some of those functions and data) to form executables.

The “Library”, below, refers to any such software library or work which has been distributed under these terms. A “work based on the Library” means either the Library or any derivative work under copyright law: that is to say, a work containing the Library or a portion of it, either verbatim or with modifications and/or translated straightforwardly into another language. (Hereinafter,

translation is included without limitation in the term “modification”).

“Source code” for a work means the preferred form of the work for making modifications to it. For a library, complete source code means all the source code for all modules it contains, plus any associated interface definition files, plus the scripts used to control compilation and installation of the library.

Activities other than copying, distribution and modification are not covered by this License; they are outside its scope. The act of running a program using the Library is not restricted, and output from such a program is covered only if its contents constitute a work based on the Library (independent of the use of the Library in a tool for writing it). Whether that is true depends on what the Library does and what the program that uses the Library does.

1. You may copy and distribute verbatim copies of the Library’s complete source code as you receive it, in any medium, provided that you conspicuously and appropriately publish on each copy an appropriate copyright notice and disclaimer of warranty; keep intact all the notices that refer to this License and to the absence of any warranty; and distribute a copy of this License along with the Library.

You may charge a fee for the physical act of transferring a copy, and you may at your option offer warranty protection in exchange for a fee.

2. You may modify your copy or copies of the Library or any portion of it, thus forming a work based on the Library, and copy and distribute such modifications or work under the terms of Section 1 above, provided that you also meet all of these conditions:
 - a) The modified work must itself be a software library.
 - b) You must cause the files modified to carry prominent notices stating that you changed the files and the date of any change.
 - c) You must cause the whole of the work to be licensed at no charge to all third parties under the terms of this License.
 - d) If a facility in the modified Library refers to a function or a table of data to be supplied by an application program that uses the facility, other than as an argument passed when the facility is invoked, then you must make a good faith effort to ensure that, in the event an application does not supply such function or table, the facility still operates, and performs whatever part of its purpose remains meaningful.

(For example, a function in a library to compute square roots has a purpose that is entirely well-defined independent of the application. Therefore, Subsection 2d requires that any application-supplied function or table used by this function must be optional: if the application does not supply it, the square root function must still compute square roots.)

These requirements apply to the modified work as a whole. If identifiable sections of that work are not derived from the Library, and can be reasonably considered independent and separate works in themselves, then this License, and its terms, do not apply to those sections when you distribute them as separate works. But when you distribute the same sections as part of a whole which is a work based on the Library, the distribution of the whole must be on the terms of this License, whose permissions for other licensees extend to the entire whole, and thus to each and every part regardless of who wrote it.

Thus, it is not the intent of this section to claim rights or contest your rights to work written entirely by you; rather, the intent is to exercise the right to control the distribution of derivative or collective works based on the Library.

In addition, mere aggregation of another work not based on the Library with the Library (or with a work based on the Library) on a volume of a storage or distribution medium does not bring the other work under the scope of this License.

3. You may opt to apply the terms of the ordinary GNU General Public License instead of this License to a given copy of the Library. To do this, you must alter all the notices that refer to this License, so that they refer to the ordinary GNU General Public License, version 2, instead of to this License. (If a newer version than version 2 of the ordinary GNU General Public License has appeared, then you can specify that version instead if you wish.) Do not make any other change in these notices.

Once this change is made in a given copy, it is irreversible for that copy, so the ordinary GNU General Public License applies to all subsequent copies and derivative works made from that copy.

This option is useful when you wish to copy part of the code of the Library into a program that is not a library.

4. You may copy and distribute the Library (or a portion or derivative of it, under Section 2) in object code or executable form under the terms of Sections

1 and 2 above provided that you accompany it with the complete corresponding machine-readable source code, which must be distributed under the terms of Sections 1 and 2 above on a medium customarily used for software interchange.

If distribution of object code is made by offering access to copy from a designated place, then offering equivalent access to copy the source code from the same place satisfies the requirement to distribute the source code, even though third parties are not compelled to copy the source along with the object code.

5. A program that contains no derivative of any portion of the Library, but is designed to work with the Library by being compiled or linked with it, is called a “work that uses the Library”. Such a work, in isolation, is not a derivative work of the Library, and therefore falls outside the scope of this License.

However, linking a “work that uses the Library” with the Library creates an executable that is a derivative of the Library (because it contains portions of the Library), rather than a “work that uses the library”. The executable is therefore covered by this License. Section 6 states terms for distribution of such executables.

When a “work that uses the Library” uses material from a header file that is part of the Library, the object code for the work may be a derivative work of the Library even though the source code is not.

Whether this is true is especially significant if the work can be linked without the Library, or if the work is itself a library. The threshold for this to be true is not precisely defined by law.

If such an object file uses only numerical parameters, data structure layouts and accessors, and small macros and small inline functions (ten lines or less in length), then the use of the object file is unrestricted, regardless of whether it is legally a derivative work. (Executables containing this object code plus portions of the Library will still fall under Section 6.)

Otherwise, if the work is a derivative of the Library, you may distribute the object code for the work under the terms of Section 6.

Any executables containing that work also fall under Section 6, whether or not they are linked directly with the Library itself.

6. As an exception to the Sections above, you may also combine or link a “work that uses the Library” with the Library to produce a work containing portions of the Library, and distribute that work under terms of your choice, provided that the terms permit modification of the work for the customer’s

own use and reverse engineering for debugging such modifications.

You must give prominent notice with each copy of the work that the Library is used in it and that the Library and its use are covered by this License. You must supply a copy of this License. If the work during execution displays copyright notices, you must include the copyright notice for the Library among them, as well as a reference directing the user to the copy of this License. Also, you must do one of these things:

- a) Accompany the work with the complete corresponding machine-readable source code for the Library including whatever changes were used in the work (which must be distributed under Sections 1 and 2 above); and, if the work is an executable linked with the Library, with the complete machine-readable “work that uses the Library”, as object code and/or source code, so that the user can modify the Library and then relink to produce a modified executable containing the modified Library. (It is understood that the user who changes the contents of definitions files in the Library will not necessarily be able to recompile the application to use the modified definitions.)
- b) Use a suitable shared library mechanism for linking with the Library. A suitable mechanism is one that (1) uses at run time a copy of the library already present on the user’s computer system, rather than copying library functions into the executable, and (2) will operate properly with a modified version of the library, if the user installs one, as long as the modified version is interface-compatible with the version that the work was made with.
- c) Accompany the work with a written offer, valid for at least three years, to give the same user the materials specified in Subsection 6a, above, for a charge no more than the cost of performing this distribution.
- d) If distribution of the work is made by offering access to copy from a designated place, offer equivalent access to copy the above specified materials from the same place.
- e) Verify that the user has already received a copy of these materials or that you have already sent this user a copy.

For an executable, the required form of the “work that uses the Library” must include any data and utility programs needed for reproducing the executable from it. However, as a special exception, the materials to be distributed need not include anything that is normally distributed (in either source or binary form) with the

major components (compiler, kernel, and so on) of the operating system on which the executable runs, unless that component itself accompanies the executable.

It may happen that this requirement contradicts the license restrictions of other proprietary libraries that do not normally accompany the operating system. Such a contradiction means you cannot use both them and the Library together in an executable that you distribute.

7. You may place library facilities that are a work based on the Library side-by-side in a single library together with other library facilities not covered by this License, and distribute such a combined library, provided that the separate distribution of the work based on the Library and of the other library facilities is otherwise permitted, and provided that you do these two things:
 - a) Accompany the combined library with a copy of the same work based on the Library, uncombined with any other library facilities. This must be distributed under the terms of the Sections above.
 - b) Give prominent notice with the combined library of the fact that part of it is a work based on the Library, and explaining where to find the accompanying uncombined form of the same work.
8. You may not copy, modify, sublicense, link with, or distribute the Library except as expressly provided under this License. Any attempt otherwise to copy, modify, sublicense, link with, or distribute the Library is void, and will automatically terminate your rights under this License. However, parties who have received copies, or rights, from you under this License will not have their licenses terminated so long as such parties remain in full compliance.
9. You are not required to accept this License, since you have not signed it. However, nothing else grants you permission to modify or distribute the Library or its derivative works. These actions are prohibited by law if you do not accept this License. Therefore, by modifying or distributing the Library (or any work based on the Library), you indicate your acceptance of this License to do so, and all its terms and conditions for copying, distributing or modifying the Library or works based on it.
10. Each time you redistribute the Library (or any work based on the Library), the recipient automatically receives a license from the original licensor to copy, distribute, link with or modify the Library subject to these terms and conditions. You may not impose any further restrictions on the recipients' exercise

of the rights granted herein. You are not responsible for enforcing compliance by third parties with this License.

11. If, as a consequence of a court judgment or allegation of patent infringement or for any other reason (not limited to patent issues), conditions are imposed on you (whether by court order, agreement or otherwise) that contradict the conditions of this License, they do not excuse you from the conditions of this License. If you cannot distribute so as to satisfy simultaneously your obligations under this License and any other pertinent obligations, then as a consequence you may not distribute the Library at all. For example, if a patent license would not permit royalty-free redistribution of the Library by all those who receive copies directly or indirectly through you, then the only way you could satisfy both it and this License would be to refrain entirely from distribution of the Library.

If any portion of this section is held invalid or unenforceable under any particular circumstance, the balance of the section is intended to apply, and the section as a whole is intended to apply in other circumstances.

It is not the purpose of this section to induce you to infringe any patents or other property right claims or to contest validity of any such claims; this section has the sole purpose of protecting the integrity of the free software distribution system which is implemented by public license practices. Many people have made generous contributions to the wide range of software distributed through that system in reliance on consistent application of that system; it is up to the author/donor to decide if he or she is willing to distribute software through any other system and a licensee cannot impose that choice.

This section is intended to make thoroughly clear what is believed to be a consequence of the rest of this License.

12. If the distribution and/or use of the Library is restricted in certain countries either by patents or by copyrighted interfaces, the original copyright holder who places the Library under this License may add an explicit geographical distribution limitation excluding those countries, so that distribution is permitted only in or among countries not thus excluded. In such case, this License incorporates the limitation as if written in the body of this License.
13. The Free Software Foundation may publish revised and/or new versions of the Lesser General Public License from time to time. Such new versions will be similar in spirit to the present version, but may differ in detail to address new problems or concerns.

Each version is given a distinguishing version number. If the Library specifies a version number of this License which applies to it and “any later version”, you have the option of following the terms and conditions either of that version or of any later version published by the Free Software Foundation. If the Library does not specify a license version number, you may choose any version ever published by the Free Software Foundation.

14. If you wish to incorporate parts of the Library into other free programs whose distribution conditions are incompatible with these, write to the author to ask for permission. For software which is copyrighted by the Free Software Foundation, write to the Free Software Foundation; we sometimes make exceptions for this. Our decision will be guided by the two goals of preserving the free status of all derivatives of our free software and of promoting the sharing and reuse of software generally.

NO WARRANTY

15. BECAUSE THE LIBRARY IS LICENSED FREE OF CHARGE, THERE IS NO WARRANTY FOR THE LIBRARY, TO THE EXTENT PERMITTED BY APPLICABLE LAW. EXCEPT WHEN OTHERWISE STATED IN WRITING THE COPYRIGHT HOLDERS AND/OR OTHER PARTIES PROVIDE THE LIBRARY “AS IS” WITHOUT WARRANTY OF ANY KIND, EITHER EXPRESSED OR IMPLIED, INCLUDING, BUT NOT LIMITED TO, THE IMPLIED WARRANTIES OF MERCHANTABILITY AND FITNESS FOR A PARTICULAR PURPOSE. THE ENTIRE RISK AS TO THE QUALITY AND PERFORMANCE OF THE LIBRARY IS WITH YOU. SHOULD THE LIBRARY PROVE DEFECTIVE, YOU ASSUME THE COST OF ALL NECESSARY SERVICING, REPAIR OR CORRECTION.
16. IN NO EVENT UNLESS REQUIRED BY APPLICABLE LAW OR AGREED TO IN WRITING WILL ANY COPYRIGHT HOLDER, OR ANY OTHER PARTY WHO MAY MODIFY AND/OR REDISTRIBUTE THE LIBRARY AS PERMITTED ABOVE, BE LIABLE TO YOU FOR DAMAGES, INCLUDING ANY GENERAL, SPECIAL, INCIDENTAL OR CONSEQUENTIAL DAMAGES ARISING OUT OF THE USE OR INABILITY TO USE THE LIBRARY (INCLUDING BUT NOT LIMITED TO LOSS OF DATA OR DATA BEING RENDERED INACCURATE OR LOSSES SUSTAINED BY YOU OR THIRD PARTIES OR A FAILURE OF THE LIBRARY TO OPERATE

WITH ANY OTHER SOFTWARE), EVEN IF SUCH HOLDER OR OTHER PARTY HAS BEEN ADVISED OF THE POSSIBILITY OF SUCH DAMAGES.

END OF TERMS AND CONDITIONS

How to Apply These Terms to Your New Libraries

If you develop a new library, and you want it to be of the greatest possible use to the public, we recommend making it free software that everyone can redistribute and change. You can do so by permitting redistribution under these terms (or, alternatively, under the terms of the ordinary General Public License).

To apply these terms, attach the following notices to the library. It is safest to attach them to the start of each source file to most effectively convey the exclusion of warranty; and each file should have at least the “copyright” line and a pointer to where the full notice is found.

<one line to give the library’s name and a brief idea of what it does.>

Copyright (C) <year> <name of author>

This library is free software; you can redistribute it and/or modify it under the terms of the GNU Lesser General Public License as published by the Free Software Foundation; either version 2.1 of the License, or (at your option) any later version.

This library is distributed in the hope that it will be useful, but WITHOUT ANY WARRANTY; without even the implied warranty of MERCHANTABILITY or FITNESS FOR A PARTICULAR PURPOSE. See the GNU Lesser General Public License for more details.

You should have received a copy of the GNU Lesser General Public License along with this library; if not, write to the Free Software Foundation, Inc., 51 Franklin Street, Fifth Floor, Boston, MA 02110-1301 USA

Also add information on how to contact you by electronic and paper mail.

You should also get your employer (if you work as a programmer) or your school, if any, to sign a “copyright disclaimer” for the library, if necessary. Here is a sample; alter the names:

Yoyodyne, Inc., hereby disclaims all copyright interest in the library ‘Frob’ (a library for tweaking knobs) written by James Random Hacker.

<signature of Ty Coon>, 1 April 1990
Ty Coon, President of Vice

That’s all there is to it!

Trademarks

- “IPELA” and **IPELA** are trademarks of Sony Corporation.
- Other products or system names appearing in this document are trademarks or registered trademarks of their respective owners.

Further, the ®, or ™ symbols are not used in the text.

